

Hackney's Early Language and Home Learning pathway

Having strong communication skills is vital for educational achievements, forming social relationships, wellbeing and mental health, and future employment opportunities. Some children are starting school without the communication skills they need to learn and thrive. However, all children have the potential to be strong communicators and everyone who interacts with a child has a role to play in supporting their early language development.

Hackney is committed to ensuring there is:

- Early identification of language and communication needs
- A clear and robust offer of universal, targeted and specialist support for all children

This pathway is intended to guide professionals to early language support for children in Hackney.



N.B. It is expected that children may benefit from different levels of support (universal, targeted and specialist) at different times in their early years. Universal supports will also benefit children who are accessing targeted or specialist support.

Identification

Many children are identified at key contacts (e.g. by health visiting or at an integrated review), however identification can occur at any point during a child's early years when a concern arises.

Identification opportunities for professionals:

- 8-10 month review
- 27 month review
- Integrated review
- ASQ/ELIM
- Early years practitioner observation — EYFS Developmental journal (e.g. Early years, child minder or stay and play)
- WellComm assessment
- Verbo screener

Identification opportunities for parents/caregivers:

- Observations at home
- Online resources (e.g. [Talking Point progress checker](#), [Get Hackney Talking](#), [Our Journey Birth to 5 years](#))
- Discussions with professionals who know the child (e.g. GP)

NO CONCERNS

- ELIM score is more than 17
- ASQ score above the cut off
- Green score on Wellcomm

MILD TO MODERATE CONCERNS

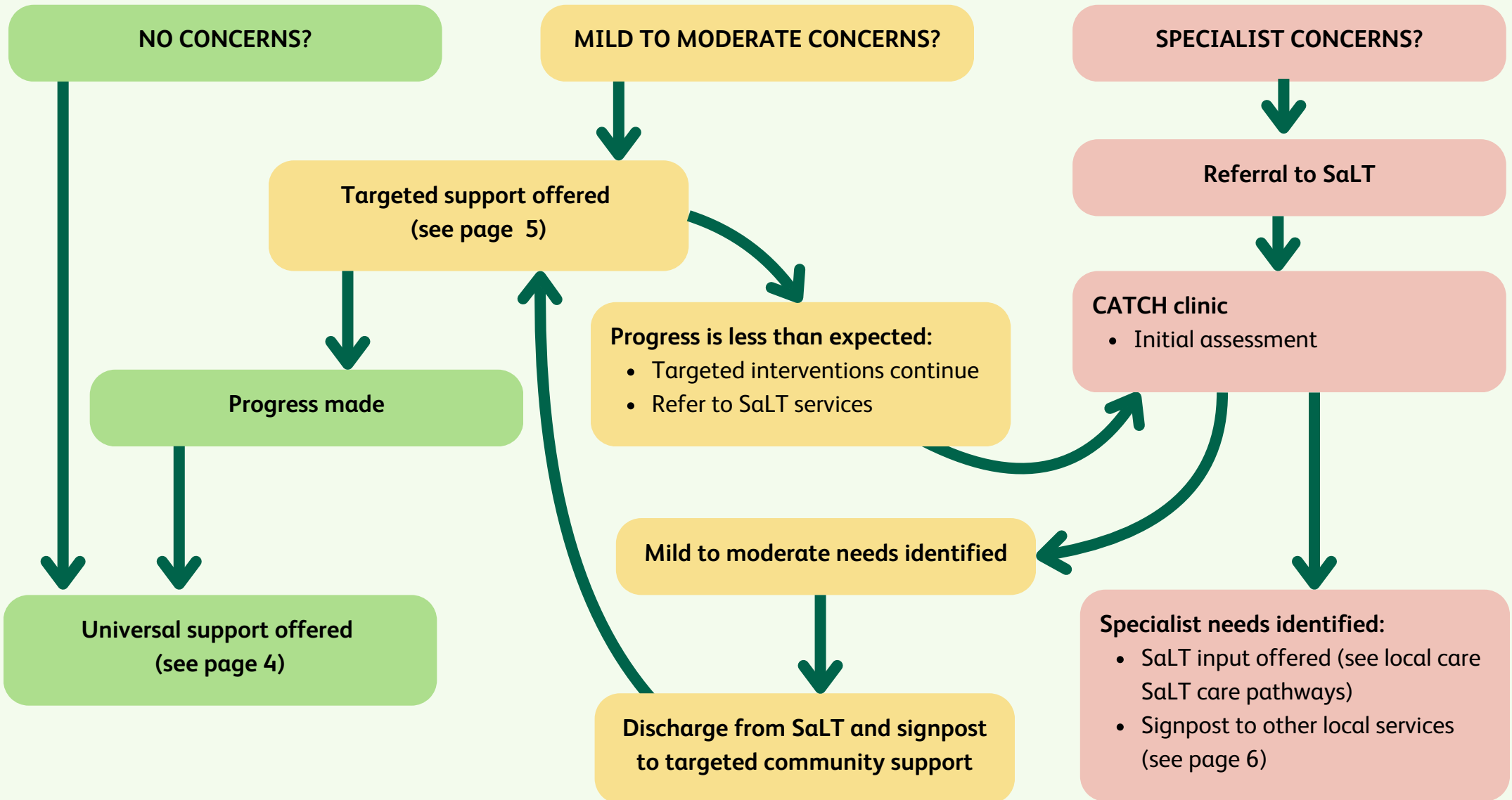
- Some needs identified by professionals or by parents (e.g. mild language delay)
- Close to cut off on ASQ
- ELIM score is 17
- Amber score on Wellcomm

SPECIALIST CONCERNS

- Social communication differences
- Selective mutism
- Severe speech sound errors
- Severe language delay
- Stammer
- Scoring very low or below cut off for ASQ
- ELIM score is below 17
- Red score on Wellcomm

Referral pathway

N.B. Children who have English as an additional language only need a referral to SaLT when they have difficulties in their home language.



Universal Support

Children learn communication skills from interactions with responsive communication partners. Giving a child daily opportunities to play and interact with others gives them the best opportunity to develop strong communication skills. This can be at home, at stay and play or music sessions, or in the wider community. The following resources are available for all families to utilise.

All settings in Hackney are offered Watch Wait Communicate for Practitioners training to make best use of the daily interactions they have with children.

Community based support services

Hackney libraries

Sharing books and stories with children is a rich language learning opportunity. Libraries also offer dedicated sessions for under 5s called Rhymes and Stories.

Hackney Playbus (brings play opportunities to families)

Children & Family Hubs and Children's centres

Find out times and dates for free drop-in sessions with play opportunities which are brilliant for supporting your child's language development. This includes:

- Peep Learning Together courses

Online resources

Hackney based

- Get Hackney Talking
- Our Journey from Birth to 5 Years

National

- Walk and talk trail
- BBC Tiny Happy People
- Words for Life
- Brain Building Tips: Look, Say, Sing and Play.
- Speech and Language UK: Help for Families

Targeted Support

Some children benefit from more specific language learning environments to reach their communication potential. Hackney provides the following targeted support to these children and their families:

Speech and Language Therapy (SaLT)

Early years practitioners and childminders access training provided by the SaLT team, Area SENCO support and Early Years consultants to enable them to support early language development in children needing more support. Childminders also receive support from the Childminder Network Coordinators.

Early years settings and childminders are encouraged to use the WellComm Big Book of ideas to support language and communication development.

Children & Family Hubs and Children's centres

Family Navigators can connect families to the following support services:

- REAL
- Family practitioner support
- Peep

Health Visiting

Children who need targeted support receive more regular follow ups from their health visitor. Health visitors can provide support and advice on how to promote children's language and communication skills.

When there are speech and language concerns Health visitors will share resources provided by the SaLT team.

Specialist support

Some children with more specific or severe communication needs require specialist support to develop their language or communication skills. These children will be held on the speech and language therapy caseload and will receive individualised therapy to meet their needs.

Speech and Language Therapy (SaLT)

Specialist sessions

Speech and language therapists offer one on one sessions to support children with unique communication needs.

Workshops

The children's SaLT service runs several workshops which aim to give parents and carers information and tools to support their children. This includes:

- Parent Makaton
- Let's Talk Play
- Understanding your Child's Communication and Emotional Regulation.

The MDT also offers parent workshops that benefit children with specialist communication needs (e.g. sensory workshops offered by Occupational Therapy)

Hackney Ark

Offers assessment services such as:

- Audiology and Complex Communication Clinic

Area SENCO support in settings

Provides support in early years settings to children with additional needs and the staff who support them.

This includes:

- Coaching
- Modelling of interventions
- Advice on targeting settings