

success in the making

# Hackney's Primary Schools

2019 ADMISSION GUIDE



## DATA PROTECTION

---

The London Borough of Hackney is a data controller for the purposes of the General Data Protection Regulation and Data Protection Act 2018. The London Borough of Hackney will handle any personal data provided during an admissions application in accordance with this information legislation.

Your personal data will be processed for the purposes of handling your school admission application, school admission appeals, sending you questionnaires, and assessing pupils' eligibility for various pupil benefits and services as appropriate. The London Borough of Hackney also has a duty under the Children's Act 2004 to work with partners to provide and improve services for children and young people in the borough. Therefore we may also share this information where necessary with other bodies responsible for administering Health, safeguarding and other services to children and young people where the law allows. The London Borough of Hackney must also protect public funds and may use personal information to detect and prevent fraud.

Published by Hackney Learning Trust, London Borough of Hackney.  
Produced by Hackney Design, Communications & Print, HDS3794  
Photography by Martin Phelps ([www.martinphelps.com](http://www.martinphelps.com)).  
All images are from pupils of Baden Powell, Hackney New Primary, Halley House, Princess May, St Dominic's, St Paul's with St Michael's and The Olive schools.  
© Copyright 2016 Hackney Learning Trust, London Borough of Hackney.  
All rights reserved. Any unauthorised use, copying, storage, transmission or distribution will constitute an infringement of copyright.



# Hackney's Primary Schools

## 2019 ADMISSION GUIDE

For children born between 1 September 2014 and 31 August 2015 who start Reception class in September 2019

## CONTENTS

---

### INTRODUCTION

---

05 Welcome & key information

06 Important dates

### HOW TO APPLY

---

06 Additional documentation

06 Children with special educational needs

07 Map of primary schools in Hackney

08 Before you apply

09 Myth busters – get the facts!

10 Applying online – step-by-step guide

### PROCESSING YOUR APPLICATION – HOW DOES IT WORK?

---

12 Home-to-school distance

12 Twins, triplets and multiple births

12 Late applications

12 Changing your preferences

12 Home address & moving house

13 Applying from overseas

13 Fraudulent applications

14 Exceptional medical or social needs

14 Deferring Reception until September 2020

14 Looked after children

### NATIONAL OFFER DAY – WHAT HAPPENS NEXT?

---

15 Your school place

15 Responding to your offer

15 When can my child start reception class?

15 Unsuccessful applications

15 Waiting lists

15 Appeals

### HACKNEY PRIMARY SCHOOLS

---

16 Admission criteria for Hackney community primary schools

17 How places were offered in 2018

18 Baden Powell Primary School

18 Benthall Primary School

## Contents continued

|    |  |                            |   |
|----|--|----------------------------|---|
| 18 | Berger Primary School                      | 35                         | Sebright School                               |
| 18 | Betty Layward Primary School               | 35                         | Shacklewell Primary School                    |
| 18 | Colvestone Primary School                  | 35                         | Shoreditch Park Primary School                |
| 18 | Daubeney Primary School                    | 36                         | Simon Marks Jewish Primary School             |
| 19 | De Beauvoir Primary School                 | 37                         | Sir Thomas Abney School                       |
| 19 | Gainsborough Community Primary School      | 37                         | Southwold School                              |
| 19 | Gayhurst Community School                  | 37                         | Springfield Community Primary School          |
| 19 | Grasmere Primary School                    | 38                         | St Dominic's Catholic Primary School          |
| 19 | Grazebrook Primary School                  | 39                         | St John & St James CE Primary School          |
| 20 | Hackney New Primary School                 | 41                         | St John of Jerusalem CE Primary School        |
| 21 | Halley House School                        | 42                         | St John the Baptist CE Primary School         |
| 22 | Harrington Hill Primary School             | 43                         | St Mary's CE Primary School                   |
| 22 | Holmleigh Primary School                   | 44                         | St Matthias CE Primary School                 |
| 22 | Holy Trinity CE Primary School             | 45                         | St Monica's Catholic Primary School           |
| 24 | Hoxton Garden School                       | 46                         | St Paul's with St Michael's CE Primary School |
| 24 | Jubilee School                             | 47                         | St Scholastica Catholic Primary School        |
| 24 | Kingsmead Primary School                   | 49                         | The Olive School Hackney                      |
| 24 | Lauriston Primary School                   | 50                         | Thomas Fairchild Community School             |
| 24 | London Fields Primary School               | 50                         | Tyssen Community Primary School               |
| 25 | Lubavitch Boys School                      | 50                         | William Patten Primary School                 |
| 26 | Lubavitch Ruth Lunzer Girls Primary School | 50                         | Woodberry Down Community Primary School       |
| 27 | Mandeville Primary School                  | <b>FURTHER INFORMATION</b> |   |
| 27 | Millfields Community School                | 51                         | Neighbouring local authorities                |
| 27 | Morningside Primary School                 | 51                         | Pupil benefits & pupil premium                |
| 28 | Mossbourne Parkside Academy                | 51                         | Free school meals                             |
| 29 | Mossbourne Riverside Academy               | 51                         | Home to school travel                         |
| 30 | Nightingale Primary School                 | 53                         | Explanation of terminology                    |
| 31 | Northwold Primary School                   |                            |   |
| 32 | Orchard Primary School                     |                            |   |
| 33 | Our Lady and St Joseph's RC Primary School |                            |   |
| 34 | Parkwood Primary School                    |                            |   |
| 34 | Princess May Primary School                |                            |   |
| 35 | Queensbridge Primary School                |                            |   |
| 35 | Randal Cremer Primary School               |                            |   |
| 35 | Rushmore Primary School                    |                            |   |



# WELCOME

**On behalf of the Headteachers, teachers and support staff, we would like to welcome you to Hackney.**

Choosing a primary school for your child is a huge decision for any family, and we're pleased that you, like so many other local parents/carers, are thinking about sending your child to a Hackney school.

Our local schools have changed immeasurably over the last decade. Alongside a rich curriculum offer, more than 94% of our primary schools are currently rated as good or outstanding by Ofsted and 72% pupils in Hackney primary schools reached the expected standard in reading, writing and maths at key stage 2 in 2017, 10% above the national average.

This success owes a lot to the hard work of pupils and teachers, as well as the support of parents/carers. As your child becomes part of the Hackney schools' community, we hope you'll want to get involved in supporting their learning and maintaining high standards of work and behaviour.

This guide explains the steps you need to take to apply and secure your child's place at a primary school in Hackney. You will find information about all of our primary schools. The guide is designed to help you make the right decision.

Whichever school your child begins their education at, they are guaranteed excellent opportunities to provide for their success and happiness. We wish you and all children starting primary school in Hackney the very best for the future and we look forward to your child attending one of our schools.

**Cllr Anntoinette Bramble**

Deputy Mayor  
of Hackney

**Annie Gammon**

Director of Education  
Head of Hackney Learning Trust



## KEY INFORMATION

### WHO SHOULD APPLY?

If your child was born between 1 September 2014 and 31 August 2015 you must apply for them to start primary school in September 2019.

### IN YEAR ADMISSIONS

If your child has turned 5 and does not currently have a school place or you want to transfer them to a different school you need to make an 'in year' application. Go to [www.learningtrust.co.uk/inyear](http://www.learningtrust.co.uk/inyear) for more information.

### VISIT HACKNEY LEARNING TRUST

Visit the Hackney Learning Trust reception counter on the second floor on Tuesdays from 9am to 1pm and on Thursdays from 1pm to 5pm. You can speak to an Admissions and Pupil Benefits Officer in person for advice and support and access a computer to apply online. Outside these times you will need to telephone or email for support.

### CONTACT US

#### Telephone enquiries

020 8820 7000 (Option 3)  
9am to 5pm, Monday to Friday

#### Email enquiries

General enquiries  
[admissions@learningtrust.co.uk](mailto:admissions@learningtrust.co.uk)

Reception class admissions  
[reception.class@learningtrust.co.uk](mailto:reception.class@learningtrust.co.uk)

In-Year admissions  
[inyear@learningtrust.co.uk](mailto:inyear@learningtrust.co.uk)

#### In Person

HLT 2nd Floor Reception  
Tuesdays from 9am to 1pm and  
Thursdays from 1pm to 5pm.

## IMPORTANT DATES

|                                |   |
|--------------------------------|---|
| Monday 3 September 2018        | Online applications open  |
| <b>Tuesday 15 January 2019</b> | <b>Closing date for applications</b>  |
| Friday 8 February 2019         | Last date to explain why your application was late, request changes to your application submitted on time or provide evidence of a change of address. See pages 12 & 13 for further information |
| <b>Tuesday 16 April 2019</b>   | <b>National offer day.</b> See page 15 for further information  |
| Tuesday 30 April 2019          | Last date to respond to your offer. See page 15 for further information   |
| September 2019                 | Children start school   |

## HOW TO APPLY

Apply for a reception class place from **3 September 2018**. You should complete Hackney Learning Trust's Common Application Form (CAF) online at [www.eadmissions.org.uk](http://www.eadmissions.org.uk) (see page 10 for step-by-step instructions). You can list up to six state-funded primary schools, academies or free schools anywhere in London. List your favourite school as the first preference, then your next favourite school as your second preference and so on.

**You must apply online before midnight on Tuesday 15 January 2019.**

Religious schools will ask for extra information about your membership of a particular faith. You will have to complete a Supplementary Information Form (SIF) and/or a certificate of religious practise and return it to the school concerned if you want to be given priority on their faith based criteria. You can get the supplementary forms from Hackney Learning Trust or directly from any of the schools listed below.

The following religious primary schools in Hackney will ask you to complete a supplementary form:

- Holy Trinity, Church of England
- Lubavitch Boys, Jewish
- Lubavitch Ruth Lunzer Girls, Jewish
- Our Lady and St Joseph, Catholic
- Simon Marks, Jewish
- St Dominic's, Catholic
- St John and St James, Church of England
- St John of Jerusalem, Church of England
- St John the Baptist, Church of England
- St Mary's, Church of England
- St Matthias, Church of England
- St Monica's, Catholic
- St Paul's with St Michael's, Church of England

- St Scholastica's, Catholic

### WHAT DOCUMENTS DO I NEED TO SEND WITH MY APPLICATION?

You must upload a copy of your child's birth certificate or passport showing their date of birth after completing your online application.

You do not need to submit proof of address. To confirm your address we will check your details against council tax and other council records. If it is not possible to confirm your address we will contact you directly to request further evidence.

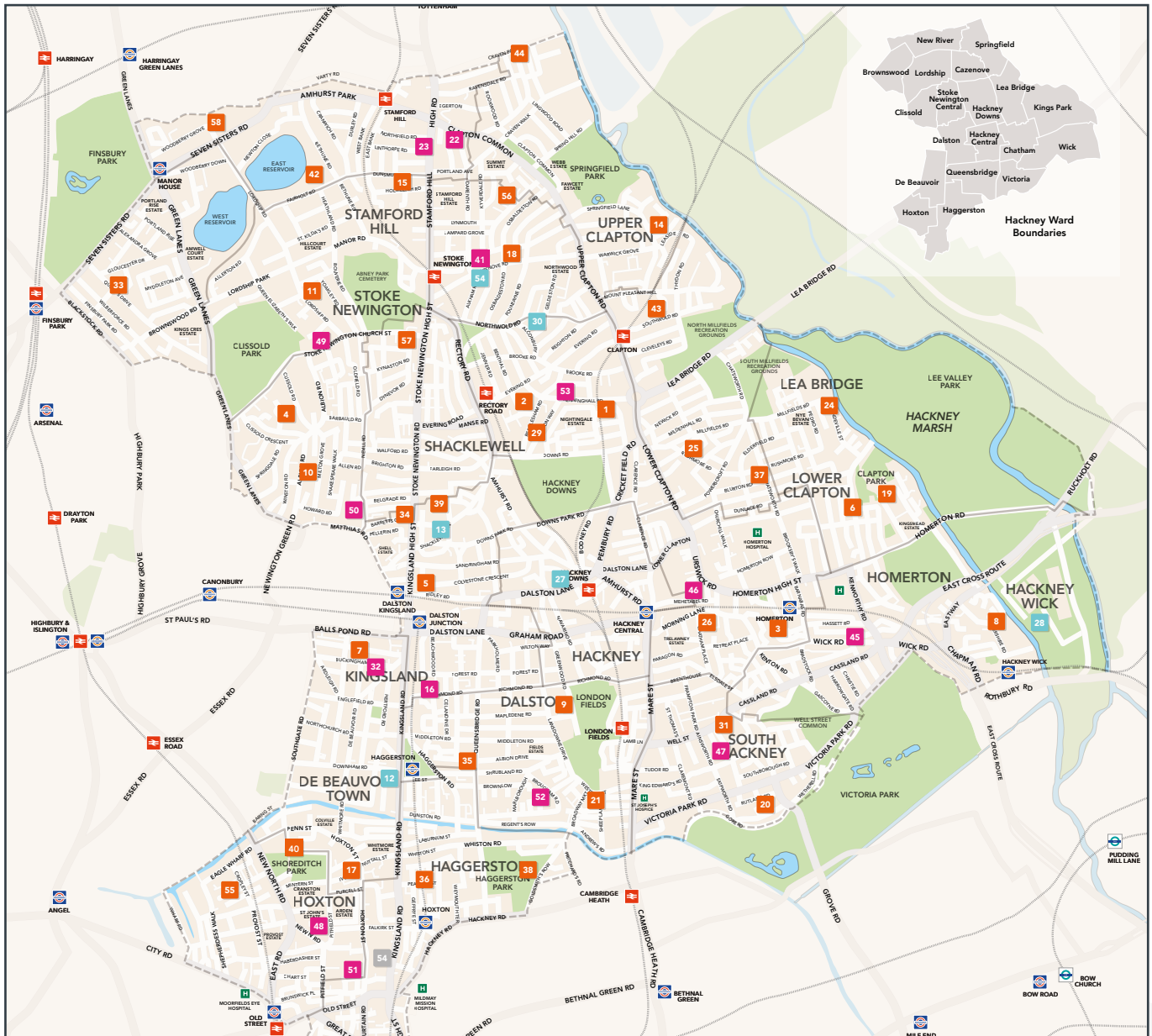
If you have changed address in the last year and the school you wish to apply for is oversubscribed, you may be asked to complete a questionnaire to prove that you live permanently at your current address.

Failure to provide proof of your child's date of birth or address evidence, if requested, may cause delays in processing your application. See page 13 for further information.

### CHILDREN WITH SPECIAL NEEDS WHO HAVE AN EDUCATION, HEALTH AND CARE PLAN?

There is a separate admission process for pupils who have or are likely to get an Education, Health and Care Plan before September 2019. If your child has a plan or has been issued with a draft plan by **4 January 2019** then your child should **not** apply through the general admission process explained in this guide. You will get separate information and a form to complete from the Education, Health and Care Plan (EHCP) team. You should use this form to list the schools you prefer for your child. Visit [www.hackneylocaloffer.co.uk/primarysend](http://www.hackneylocaloffer.co.uk/primarysend) for more information or call **020 8820 7000** Option 4.

# PRIMARY SCHOOLS IN HACKNEY



© Crown copyright. All rights reserved (licence number 100019635) 2016

## Community Primary Schools

- 1) Baden Powell
- 2) Benthal
- 3) Berger
- 4) Betty Layward
- 5) Colvestone
- 6) Daubeney
- 7) De Beauvoir
- 8) Gainsborough
- 9) Gayhurst
- 10) Grasmere
- 11) Grazebrook
- 14) Harrington Hill
- 15) Holmleigh
- 17) Hoxton Garden
- 18) Jubilee
- 19) Kingsmead
- 20) Lauriston
- 21) London Fields
- 24) Mandeville
- 25) Millfields
- 26) Morningside
- 29) Nightingale
- 31) Orchard
- 33) Parkwood
- 34) Princess May
- 35) Queensbridge
- 36) Randal Cremer
- 37) Rushmore
- 38) Sebright
- 39) Shacklewell
- 40) Shoreditch Park
- 42) Sir Thomas Abney
- 43) Southwold
- 44) Springfield

- 55) Thomas Fairchild
- 56) Tyssen
- 57) William Patten
- 58) Woodberry Down

## Academies & Free Primary Schools

- 12) Hackney New
- 13) Halley House
- 27) Mossbourne Parkside
- 28) Mossbourne Riverside
- 30) Northwold
- 54) The Olive, Muslim

## Religious Primary Schools

- 16) Holy Trinity, CE
- 22) Lubavitch Boys, Jewish
- 23) Lubavitch Ruth Lunzer Girls, Jewish
- 32) Our Lady & St Joseph, Catholic
- 41) Simon Marks, Jewish
- 45) St Dominic's, Catholic
- 46) St John and St James', CE
- 47) St John of Jerusalem, CE
- 48) St John the Baptist, CE
- 49) St Mary's, CE
- 50) St Matthias, CE
- 51) St Monica's, Catholic
- 52) St Paul's with St Michael's, CE
- 53) St Scholastica's, Catholic



## BEFORE YOU APPLY...

**Schools and Academies in Hackney are very popular and not all applicants can be offered a place. You should follow the advice below and think carefully about which schools you list on your application before you apply.**

### OPEN

#### VISIT SCHOOLS

You should visit schools to get an idea of what they can offer. Headteachers are more than happy for parents to visit their schools. If you cannot visit schools you can get more information from their websites. See pages 18–50 for details.



#### ARE YOUR PREFERENCES REALISTIC?

Consider how likely it is that your child will be offered a place at your preferred schools.

Read the admissions criteria for each school and figure out which criteria apply to your child. The admissions criteria for Hackney community schools are listed on page 16. For all other schools a summary of their admission criteria is included on pages 18–50. If you list a school as a preference on your application you should read the full admissions policy which is available online at [www.learningtrust.co.uk/admissionrules](http://www.learningtrust.co.uk/admissionrules) or on the school's website.

If you are unsure whether you will qualify for a place you can call the admissions team for impartial advice on **020 8820 7000**.

#### DO YOU LIVE CLOSE ENOUGH TO GET A PLACE?

Some schools use home-to-school distance as part of their admission arrangements. You can find out the approximate distance to your preferred schools using the GOV.UK schools finder online at [www.gov.uk/find-school-in-england](http://www.gov.uk/find-school-in-england)

The distance from home to school of the last child offered a place at Hackney community schools from last year is on page 17. For religious schools, free schools and academies the cut-off distances are included on pages 18–50 where applicable. Remember that although this information can be used to give you an idea of how likely it is

that you will be offered a place, the cut-off distance will change every year. We can never guarantee any child will be offered a place at any school.

#### HOW WILL YOUR CHILD TRAVEL TO SCHOOL?

It is very important that your child arrives on time to school each day. A long journey at peak times could make it difficult and may not be the best choice for your child. Hackney has a great network of buses, London overground and rail links making it easy to get to any of our local schools.

Travel to school is free on Transport for London (TfL) buses. Parents accompanying children must pay the normal fare. Some families may be eligible for help with the cost of tube and/or train journeys. See page 51 for more information.

#### RESEARCH SCHOOL PERFORMANCE AND INSPECTION OUTCOMES

All schools in Hackney are inspected regularly by Ofsted. You can access the latest Ofsted reports at [www.reports.ofsted.gov.uk](http://www.reports.ofsted.gov.uk) Headteachers will be happy to talk to you about any part of the Ofsted report for their school.

You can get information about an individual primary school's performance results from the Department for Education (DfE) website at [www.compare-school-performance.service.gov.uk](http://www.compare-school-performance.service.gov.uk)

#### GET ADVICE

Remember that the right school for your friend's child may not be the right school for your child. Seek advice from teachers, other parents and the school admissions team. Don't judge a school based solely on what others say – visit the school and make up your own mind.



## MYTH BUSTERS – GET THE FACTS!

It is easy to make assumptions about how school admissions works. Here are some of the common assumptions and misunderstandings as well as the facts.

My child has a right to a place at one of my preferred schools.

Not true! ... your child will only be offered a place if they qualify according to the school's admission criteria. If your child does not qualify for any of your preferred schools (e.g. because your preferences were unrealistic) they will be offered a place at the nearest school to your home with a vacancy remaining after all on-time applicants have been offered places. See page 15 for further information. See page 15 for further information.

My child is in the nursery so they will automatically go into Reception.

Not true! ... you must apply for your child even if they already attend the nursery. Schools must consider applications from children in the nursery in the same way as all other applicants, i.e. in accordance with the admission criteria for the school. **Children in the Nursery are NOT given priority.**

If I list only one school then I have to be offered a place.

Not true! ... listing only one school does not increase your child's chances of being offered a place. You are strongly advised to include your nearest schools amongst your preferences.

I live nearer to the school than the last child offered under the distance criterion last year so I'm guaranteed a place.

Not true! ... the home-to-school distance of the last child offered a place will change every year. The information about offers in 2018 for each school is listed on page 17. This information is a guide only and no child is guaranteed a place at any school.

Children in my road go to the school so my child will too.

Not always ... the number of pupils offered under each criterion at each school can change every year. Just because you know pupils living near you that go to a certain school, it does not mean that your child will be offered a place there.

If I apply to a school in another borough, their residents will have priority over me.

Not true! ... an admissions authority cannot give preference to its own residents and published admissions criteria cannot include the borough of residence. Hackney schools do not discriminate between applicants who live in the borough and those who do not.

It does not matter if my application is late.

It matters! ... if you apply after **15 January 2019**, we will look at your application after all those that applied on time have been processed. In this case it is very unlikely that you will be offered a place at a popular school.

I can only apply for Hackney schools.

Not true! ... you can apply for both Hackney and out of borough schools by listing them on the Hackney application form.

# APPLYING ONLINE – STEP BY STEP GUIDE

## BEFORE YOU START

- **Research your preferred schools** and decide your order of preference before you start the online application. See pages 8 and 9 for advice about choosing schools.
- **Get an email address** – you need one to apply and you need to be able to access it in April 2019. If you don't have one go to [www.googlemail.com](http://www.googlemail.com) and click 'Create an account'.
- **Get a friend, a relative or your child to help you make the application** if you have trouble with computers.

## LOGIN OR REGISTER

01. Go to [www.eadmissions.org.uk](http://www.eadmissions.org.uk)

02. If you have applied before (e.g. for an older child) choose 'Login to your account'. Enter your email and password from your previous application and click 'Login'. Skip to step 09.

03. If this is the first time you have applied you must register your details and choose your password. Click 'Register to apply online'.

04. Enter your name and contact details then click 'Next'. Select your address from the list then click 'Next'. Create a password then click 'Next'. Set up your security questions and answers then click 'Next'.

**Apply for a USO account**

Please enter your name and contact details, then click Next.

Title:

First name:

05. Choose 'Click here to login to the eAdmissions website'.

Thank you for completing the setup of your USO account  
To confirm: your username is **court0104.uso**.

Please be sure to remember the password which you set. If this password is forgotten, you will be able to generate a new one, but it will not be possible to recover the existing one.

**When you login to the eAdmissions website you will be sent a validation email. You must complete the validation process immediately to be able to start your application.**

[Click here to login to the eAdmissions website](#)

06. Enter your username or email and your password then click 'Login'.

**TIP:** If you can't remember your username or password click the 'Forgotten your username or password?' link.

**In this section**

- School admissions home
- Information & Guidance
- Register to apply online
- Edit your account
- Login to your account**
- Find your nearest school
- Local Authority details
- eAdmissions tutorials

**Login**

Username

Password

Login

- [Forgotten your username or password?](#)
- [Not registered yet?](#)

07. After you log in for the first time you will be sent a confirmation by email. Open the email and click the link to confirm your email address. **You MUST confirm your email address before you can make your application.**

08. After you click the link in your email you will see the email validation webpage. Click 'Please Login to start your application'.

**In this section**

- School admissions home
- Information & Guidance
- Register to apply online
- Edit your account
- Login to your account
- Find your nearest school
- Local Authority details
- eAdmissions tutorials

**Validation** Currently logged in as: court0104.uso

Back Logout

**Thank you for validating your email address**

Please [Login](#) to start your application.

The ParentComms mobile app is an additional way for you to receive the outcome of your online application, it is designed to help parents stay connected with their child's school.

09. After you log in you must check and update your details if they have changed. Tick the boxes to confirm your details are correct and that you agree to the privacy policy, then click 'Save and Continue'.

My personal details are correct

I agree to the privacy policy

Return Change Password Save and Continue

Back

10. Click 'Start a new application for a child that is not listed below' button.

## CHILD DETAILS AND PREFERRED SCHOOLS

11. Enter your child's details and click 'Save and continue'.

12. Choose your preferred school from the list. Change the local authority if the school is outside Hackney. Click 'Add this school'.

13. Add specific information about the school. Indicate if your child has brothers or sisters already attending, if they have medical/social reasons to attend the school or if you are a staff member, then click 'Next'. See pages 14 & 16 for more information.

14. Repeat steps 12 & 13 to list more schools until you have listed all your preferences.
15. Change the order of preferences by clicking 'Move up' / 'Move down'.
16. Once all your preferred schools are listed click 'Next'. You will also need to click 'Continue' if you have listed fewer than six schools.

### FINAL CHECK AND SUBMIT

17. Check your application carefully. To make changes click 'Back' at the bottom of the page.
18. Read and agree the declaration and Hackney terms and conditions by clicking in the boxes.

19. Click 'Submit Application'.
20. You will receive a confirmation email with your application reference number (e.g. 204-2019-09-E-001234). This email is proof that you have submitted your application successfully.

### MAKE CHANGES AND ATTACH DOCUMENTS

- You can make changes and attach proof of your child's date of birth up to the closing date by logging into the system with your username or email address and your password.
- Each time you make a change you must resubmit your application. You will receive a confirmation email each time you successfully change your application.
- You will also receive a confirmation for each document you attach.
- **NEW:** You do NOT need to provide proof of your address. We will confirm your address against council tax and other council records.

### HELP AND SUPPORT

If you need help logging into your online application or registering to apply online you can contact the London eAdmissions support helpdesk on 020 8255 5555 (option 1 or 4) or email [support@eadmissions.org.uk](mailto:support@eadmissions.org.uk)

If you have any other problems or questions please contact us on 020 8820 7000 or email [reception.class@learningtrust.co.uk](mailto:reception.class@learningtrust.co.uk)





# PROCESSING YOUR APPLICATION – HOW DOES IT WORK?

The Admissions Team at Hackney Learning Trust will add all your preferences to a database so that these can be considered all at the same time. Preferences for community schools will be considered by the Local Authority (LA). If you list a religious school, academy or free school within Hackney, your details will be forwarded to them to consider your application and rank your child in accordance with their admissions criteria.

The schools won't know whether you've listed them first, second, third and so on. If you've listed any schools outside of Hackney, your details will be sent to the appropriate LA Admissions Team to consider.

After all your preferences have been processed, we will update our database with all potential offers for your child and you will be offered a place at the school ranked the highest out of those potential offers. For example, if there are available places for your child at the schools ranked third and fourth on your list, we'll offer you a place at your third preference school. You will not be advised about the offer that could have been made at the fourth preference school and this place will be given to another child.

## HOME-TO-SCHOOL DISTANCE

Home-to-school distances are measured in a straight line using a computerised distance measuring system from your child's home address to the main entrance of the school. Hackney Learning Trust uses geographical references (i.e. eastings and northings) as provided by the National Land and Property Gazetteer (NLPG) database to determine the start point for your address. For most homes the eastings and northings are not located at the front door but they usually fall within the footprint of your building. If you live in a block of flats the easting and northing point for the block will be used. The measuring point used to determine the school main entrance may not be the gate or entrance currently used by children and staff entering the school.

To help you work out the approximate distance between your address and a school, you can use the GOV.UK schools finder online at [www.gov.uk/find-school-in-england](http://www.gov.uk/find-school-in-england) This won't give you an exact measurement but it will give you an idea of how close you are to a school's cut-off distance in the previous year, as listed on pages 17 to 50. Cut-off distances vary from year to year.

## TWINS, TRIPLETS AND MULTIPLE BIRTHS

Some schools will give special consideration to

multiple birth children so that they are offered the same school. e.g. if a school has only one place and the next child to be offered has a twin sibling, the school may admit the other twin sibling as well, even if this means going over their published admission number.

The admission arrangements for each school will explain how they deal with applications from multiple birth children. If this affects your children you should read the full admissions policy for your preferred schools which are available online at

[www.learningtrust.co.uk/admissionrules](http://www.learningtrust.co.uk/admissionrules)

## LATE APPLICATIONS

Applications open on 3 September 2018 and the closing date is **Tuesday 15 January 2019**. If you submit your application after this date it will be considered only if there were exceptional reasons that prevented you from applying on time. For example, this could be where you are a single parent and you have been seriously ill for an extended period, a member of your immediate family has died, or if your family has recently moved into the area or has just returned from abroad. We'll also need to see the proof of ownership or tenancy of a property within Hackney as well as a utility bill.

The last date that exceptional reasons can be considered and agreed is Friday 8 February 2019. After this date your application will be late regardless of the circumstances and will only be considered after all the applications that were sent in on time have been dealt with. This is most likely to be after 16 April 2019, but you may still receive a letter telling you the outcome of your application.

## CHANGING YOUR PREFERENCES

If you wish to change your preferences before the closing date, **Tuesday 15 January 2019**, you must login to the online application system, make changes and then resubmit your application. If you applied on time, but decide to change your preferences after the closing date, your request will be dealt with after all the late and unplaced applicants' requests for school places have been considered. The only exception is if you have moved to a new address.

## HOME ADDRESS

Your child's home address is the address where they are living on the closing date, 15 January 2019. Addresses are checked against council records and we may require you to provide evidence. (See page 6 for more information) Where parental responsibilities



are equally shared, we will consider the home address to be the place where your child sleeps and spends most of their time, from Monday to Friday. This is the address that will be used to process your application and calculate home-to-school distance or confirm a sibling attending the school.

We cannot accept a temporary address if you still possess a property that was previously used as a home address; nor will we accept a temporary address if it is used solely or mainly to obtain a school place.

In the case of UK service personnel with a confirmed posting in the area or Crown servants returning from overseas who will reside in Hackney, we will allocate a school place on the basis of the family's intended future address. For UK service personnel the application must be accompanied by an official letter declaring a relocation date and unit address or quartering address in Hackney. Applications from Crown servants will be dealt with on a case by case basis and proof of the intended future address must be provided, particularly in the case where the application includes oversubscribed schools. In all other aspects these applications will be treated as for any other Hackney resident and in accordance with published admission arrangements.

### APPLYING FROM OVERSEAS

If you reside outside the UK but intend to return to live in Hackney before the start of the 2019 academic year you must apply according to the process set out in his booklet.

You must apply using a paper application form which is available by emailing [reception.class@learningtrust.co.uk](mailto:reception.class@learningtrust.co.uk). You will not be able to use the online eAdmissions system.

Your application will be processed on the basis of your overseas address. Home-to-school distance measurements will be based on your location at the closing date, 15 January 2019. This means that you are unlikely to be offered a place at an oversubscribed school on the basis of distance.

Upon returning to the UK and providing proof that you are resident in Hackney your application will then be considered on the basis of your Hackney address.

### MOVING HOUSE

If you move you must let the Admissions Team know your new address immediately. You must provide proof of residence at your new address to confirm that you are living there before Friday 8 February 2019. This could include proof of exchange of

contracts or a tenancy agreement. We will also need to see an original utility bill, such as a gas or water bill. If you are unable to provide evidence prior to 8 February 2019, we will only be able to use your new address to adjust your child's position on the waiting list after 16 April 2019.

### FRAUDULENT APPLICATIONS AND WHISTLEBLOWING

You can report suspected fraudulent applicants to us confidentially on **020 8820 7000** (Option 3) or by emailing [reception.class@learningtrust.co.uk](mailto:reception.class@learningtrust.co.uk). You don't need to tell us who you are. Please give as much information as possible so that we can investigate the matter fully.

If a school place is offered based on fraudulent or intentionally misleading information, the offer will be withdrawn and your application processed using the appropriate address. We may also consider withdrawing the place after your child has started school, regardless of how much time has passed, if information comes to light that a false address was used during the application process. We consider that every school place obtained by deception is unfair, as other children are being deliberately denied their legitimate claim to that place.

We will also ask the new school to check your child's home address at the time of admission. If it is different from the address on the application form we will investigate further.

We carry out random checks and investigate a sample of applications where there has been a change of address in the last 12 months, or where a parent moves after 16 April 2019, up to the end of the child's first term in reception.

We will investigate all applications:

- where there are any doubts about the information provided;
- where information has been received from a member of the public to suggest a fraudulent application has been made;
- where council records do not match the application.

Any applicant who provides false information will have their offer of a school place withdrawn. They may also be subject to legal proceedings. If we find out that your home address is not in Hackney, we will advise you to make a new application via your local authority.

We reserve the right to seek additional information to carry out our investigations. We also reserve the right to carry out home visits to the address used on the application form and any other addresses used previously.

### **EXCEPTIONAL MEDICAL OR SOCIAL NEEDS**

---

Some schools and academies give priority to children who have an exceptional need to attend a specific school on medical or social grounds. If this is the case with your child you must tick the appropriate box on the online form and provide independent, professional evidence explaining why your child can only attend a particular school. Your own medical needs cannot justify a place at a particular school but your child could have a social need arising from your medical needs.

In every case you must provide detailed evidence from a GP, hospital consultant, social worker or any other agency or professional involved with your case. The evidence must be specifically about your child's medical/social condition, the effects of the condition and why, in view of this, your child needs to attend a particular school. The evidence should demonstrate detailed knowledge of the school in terms of resources and organisation which demonstrate that your child can only be admitted to the specific school and why no other school is suitable.

It is your responsibility to provide evidence to support your claim and this should be submitted with your application by the closing date, 15 January 2019. It may not be possible to consider evidence received after this date for National Offer Day (16 April 2019) but it will be considered for offers made after this date. If you tick the box on the application form but do not submit evidence your application will not be considered under this criterion and you will not be reminded to submit evidence.

The threshold to demonstrate exceptional medical or social need to attend a specific school is high and very few applications are given priority under this criterion. If you applied to be considered under this criterion but were unsuccessful you may contact the Admissions Team after offer day for information about why your medical/social claim was not accepted for community schools.

Not all academies and schools in Hackney give priority on medical or social grounds and you should check the admission criteria for your preferred schools on pages 18 to 50.

### **DEFERRING RECEPTION UNTIL SEPTEMBER 2020**

---

If you wish to delay your child's start into the Reception class from 2019 until 2020, you must apply in the normal way for a Reception place in **September 2019** (deadline Tuesday 15 January 2019). In addition you must submit a 'Request for Deferral 2019' form which is available online at [www.learningtrust.co.uk/deferreception](http://www.learningtrust.co.uk/deferreception)

Decisions will be based on the individual circumstances of your case including your views and the views of the headteachers of your preferred schools, your child's social, academic and emotional development and whether your child has been previously educated out of year group.

It is recommended that you provide evidence to support your request from relevant professionals working with your child/family that clearly demonstrates why it is in your child's best interest to be placed outside their normal age appropriate cohort.

For community schools, Hackney Learning Trust as the admission authority will decide whether your request to defer will be agreed on the basis of the information submitted. For academies and religious schools the academy trust or governing body will make the decision.

For further information go to [www.learningtrust.co.uk/deferreception](http://www.learningtrust.co.uk/deferreception)

### **LOOKED AFTER CHILDREN/ PREVIOUSLY LOOKED AFTER CHILDREN**

---

If you are completing the application for a looked after child or a child who was previously looked after but immediately after being looked after became subject to an adoption, child arrangements or special guardianship order please tell us on the application form. You must name the council who looks after the child (or previously looked after the child) and provide a letter from the social worker to confirm this. In addition, if the child was adopted or became subject to a child arrangements or special guardianship order immediately after being in care you must also provide a copy of the child arrangements order, special guardianship order or proof of adoption from the relevant local authority.

# NATIONAL OFFER DAY – WHAT HAPPENS NEXT?

## YOUR SCHOOL PLACE

If you applied online, you will receive an email on the evening of Tuesday 16 April 2019 to inform you of the outcome of your application. If you applied using a paper application, your offer will be sent by first class post on 16 April and should arrive no later than Thursday 18 April.

The offer will be for the highest ranked school on your application that was able to offer your child a place. If your child is not offered a place at any of your preferred schools they will be offered a place at the nearest school to your home with a vacancy remaining after all on-time applicants have been offered places. (See below for further information).

## RESPONDING TO YOUR OFFER

**You must respond to the offer by Tuesday 30 April.**

Your offer email will explain how to respond online. You will need to login to your online application at [www.eadmissions.org.uk](http://www.eadmissions.org.uk) using your email address or username and your password. (These details were emailed to you when you registered to apply online). If you applied using a paper application, you must complete and return the reply slip enclosed.

If you don't respond by 30 April we may withdraw the offer. We also need to know if your circumstances have changed and you no longer want the place.

## WHEN CAN MY CHILD START RECEPTION CLASS?

All children whose birthday falls between 1 September 2014 and 31 August 2015 will start primary school in September 2019.

When a school place has been offered, you can delay your child's start in reception class or request they go part-time initially. If you decide you want to delay your child's start, and you want them to remain in a school nursery, you will need to reapply for a place. Go to [www.learningtrust.co.uk/nurseryadmission](http://www.learningtrust.co.uk/nurseryadmission) for further information. If you decide to go ahead and delay your child's start in the reception class until the spring or summer term 2020, you must also let the primary school know, so that they are aware and have sufficient notice, otherwise you could lose the reception place.

In limited circumstances you can request to defer your child's admission to the Reception class for a full year until September 2020, see page 14 for more information.

## UNSUCCESSFUL APPLICATIONS

If it is not possible to offer a place at any of your preferred schools Hackney Learning Trust will offer a place at the nearest school to your home with a vacancy remaining after all on-time applicants have been offered places. You will also be advised which

schools still have places available and you may add further preferences. Detailed information will be available in your offer email.

If you need to discuss your situation in more detail, you can contact the Admissions Team on 020 8820 7000 who can give you help and advice about your options, including details of available schools outside Hackney. You may also email [reception.class@learningtrust.co.uk](mailto:reception.class@learningtrust.co.uk) for advice.

## WAITING LISTS

If you have been offered a place at a lower preference school, your child will automatically be added to the waiting lists for any Hackney schools you have ranked higher on your application form. If you have been refused a place at all Hackney schools you listed on your application form, your child will automatically be added to the waiting lists for all of them.

Your child's position on the lists will be worked out according to the admissions criteria for each school and can go up or down as other children leave or join the lists. Hackney Learning Trust will continue to offer places and maintain waiting lists until October Half Term 2019.

On 25 October 2019 waiting lists will close and you must re-apply for your child to remain on waiting lists after this date.

To ensure that your child remains on the waiting list and in consideration after 25 October 2019 you must make a separate 2019/20 In Year application before Friday 18 October 2019. From 28 October 2019, waiting lists will be maintained in accordance with the primary In Year admissions process. All primary schools will inform us when a vacancy becomes available and the next child on the waiting list will be offered a place.

## APPEALS

If you believe there are exceptional reasons why your child can only attend a particular school, you can appeal against the refusal of a place at that school. Appeals are heard by an Independent Appeal Panel and their decision is binding on Hackney Learning Trust, the school and the parent. If the Independent Appeal Panel agrees that your appeal should be upheld, the school must admit your child.

You must complete and return an appeal form by Wednesday 16 May 2018. Further information is available online at [www.learningtrust.co.uk/admissionappeals](http://www.learningtrust.co.uk/admissionappeals) You can get independent advice about appeals from the Advisory Centre for Education on 0300 0115 142 or at [www.ace-ed.org.uk](http://www.ace-ed.org.uk) and Coram Children's Legal Centre on 0300 330 5485 or at [www.childrenslegalcentre.com](http://www.childrenslegalcentre.com)

# ADMISSION CRITERIA FOR HACKNEY COMMUNITY PRIMARY SCHOOLS

Hackney Learning Trust decide the admission criteria for community primary schools. For Academies and religious schools it is the governing body or academy trust that decides the criteria (see page 18 to 50).

The criteria below are used to decide who has priority for places at the Hackney community primary schools when there are more applications than places available.

Children with an Education, Health and Care Plan which names the school will be admitted. The remaining places are offered according to the criteria below in priority order:

01. Looked after children and children who were previously looked after but immediately after being looked after became subject to an adoption, child arrangements or special guardianship order. (see page 14 for more information)
02. Children subject to a Child Protection Plan. Confirmation will be sought from Children's Social Care to confirm this status.
03. Children whose exceptional medical or social need justifies the allocation of a place at the particular school. (see page 14 for more information)
04. Children with a brother or sister on roll at the school in Reception to Year 6 at the time of the proposed admission. In cases where the family has moved address since the last sibling was offered a place, priority will only be given where the family continue to live within 0.75 miles of the school. A brother or sister must live permanently at the same address as the child for whom the application is being made. This includes a half brother or sister and a step brother or sister who lives permanently as a family unit at the same address.
05. Children of teachers in either or both of the following circumstances subject to there being no more than one teacher's child in each class:
  - a) where the teacher has been employed at the school for two years at the time of the application for (admission) and/or
  - b) where the teacher has been recruited to fill a vacant post for which there is a demonstrable skills shortage.
06. Applicants living nearest to the school as measured in a straight line using a computerised distance measuring system. (see page 12 for more information)

## TIE BREAK

Home-to-school distance will be used at a tie break with those living closer having priority. In the case of one or more applicants having the same home-to-school distance random allocation will be used. Where the application of criterion 5 would result in more than one teacher's child per class random allocation will be used to determine the successful applicant(s) under this criterion.



## PLEASE NOTE

The admissions policy for Hackney community primary schools are summarised on this page. If you want to apply for a Hackney community primary school you should read the full admissions policy which is available online at [www.learningtrust.co.uk/admissionrules](http://www.learningtrust.co.uk/admissionrules)



## HOW PLACES WERE OFFERED IN 2018

This table outlines how Reception places were offered at oversubscribed Hackney community primary schools for children starting in September 2018.

The table shows how many applicants were offered under each criterion and the home-to-school distance of the last child offered a place where applicable. The data shows offers made on national offer day, 16 April 2018.

Note: Offer information for schools that do not appear in this table is included on pages 18 to 50.

| PRIMARY SCHOOL  | TOTAL PLACES AVAILABLE | TOTAL APPLICATIONS | OFFERS BY CRITERIA                                   |   |                                       |                        |          |   |
|-----------------|------------------------|--------------------|--|---|---------------------------------------|------------------------|----------|---|
|                 |                        |                    | Education, Health & Care Plan which names the school | Looked after & previously looked after children | Children with a Child Protection Plan | Medical/social reasons | Siblings | Distance (last offered distance in miles) |
| Betty Layward   | 60                     | 236                |  |   |                                       |                        | 13       | 47 (0.486)                                |
| Gayhurst        | 75                     | 248                | 1  | 3   |                                       |                        | 41       | 30 (0.248)                                |
| Grasmere        | 30                     | 168                |  |   |                                       |                        | 10       | 20 (0.374)                                |
| Grazebrook      | 60                     | 286                | 1  |   |                                       |                        | 24       | 35 (0.280)                                |
| Holmleigh       | 30                     | 118                | 2  |   |                                       |                        | 13       | 15 (0.286)                                |
| Jubilee         | 60                     | 231                | 3  |   |                                       |                        | 20       | 37 (0.429)                                |
| Kingsmead       | 30                     | 113                |  |   |                                       |                        | 11       | 19 (1.230)                                |
| Lauriston       | 60                     | 200                | 1  |   |                                       |                        | 22       | 37 (0.614)                                |
| London Fields   | 60                     | 314                | 1  |   |                                       |                        | 18       | 41 (0.581)                                |
| Millfields      | 90                     | 253                |  | 1   |                                       |                        | 23       | 66 (0.478)                                |
| Orchard         | 90                     | 288                |  |   |                                       |                        | 40       | 50 (0.393)                                |
| Parkwood        | 30                     | 118                | 1  |   |                                       |                        | 11       | 18 (0.481)                                |
| Queensbridge    | 60                     | 297                | 2  |   |                                       |                        | 23       | 35(0.494)                                 |
| Rushmore        | 60                     | 260                |  |   |                                       |                        | 32       | 28 (0.225)                                |
| Shacklewell     | 60                     | 177                |  | 1   |                                       | 1                      | 21       | 37 (1.683)                                |
| Shoreditch Park | 60                     | 186                | 1  |   |                                       |                        | 20       | 39 (0.517)                                |
| William Patten  | 60                     | 352                |  | 1   |                                       |                        | 22       | 38 (0.206)                                |

# HACKNEY PRIMARY SCHOOLS

## General information and contact details

### 1 BADEN POWELL PRIMARY SCHOOL

Ferron Road, E5 8DN

020 8985 6176

admin@baden-powell.hackney.sch.uk

www.baden-powell.hackney.sch.uk

#### HEADTEACHER

Stephen Smith

#### SCHOOL INFORMATION

Community school  
Reception intake: 30  
Nursery classes: full-time and part-time  
Breakfast club: Yes  
After school club: Yes

#### ADMISSION CRITERIA

See page 16. All applicants seeking a place at the school for September 2018 were offered.

### 2 BENTHAL PRIMARY SCHOOL

Benthal Road, N16 7AU

020 8985 9310

office@benthal.hackney.sch.uk  
www.benthal.hackney.sch.uk

#### HEADTEACHER

Louise Drew

#### SCHOOL INFORMATION

Community school  
Reception intake: 60  
Nursery classes: full-time and part-time  
Breakfast club: Yes  
After school club: Yes

#### ADMISSION CRITERIA

See page 16. All applicants seeking a place at the school for September 2018 were offered.

### 3 BERGER PRIMARY SCHOOL

Anderson Road, E9 6HB

020 8985 6280

admin@berger.hackney.sch.uk  
www.berger.hackney.sch.uk

#### HEADTEACHER

Yusuf E Gleason

#### SCHOOL INFORMATION

Community school  
Reception intake: 60  
Nursery classes: full-time and part-time  
Breakfast club: Yes  
After school club: Yes

#### ADMISSION CRITERIA

See page 16. All applicants seeking a place at the school for September 2018 were offered.

### 4 BETTY LAYWARD PRIMARY SCHOOL

Clissold Road, N16 9EX

020 7249 7111

admin@bettylayward.hackney.sch.uk  
www.bettylayward.hackney.sch.uk

#### HEADTEACHER

Jessica Bailey

#### SCHOOL INFORMATION

Community school  
Reception intake: 60  
Nursery classes: full-time and part-time  
Breakfast club: Yes  
After school club: Yes

#### ADMISSION CRITERIA

See page 16. For information about how places were offered in 2018 see page 17.

### 5 COLVESTONE PRIMARY SCHOOL

Colvestone Crescent, E8 2LG

020 7254 1143

office@colvestone.hackney.sch.uk  
www.colvestone.hackney.sch.uk

#### HEADTEACHER

Caroline King

#### SCHOOL INFORMATION

Community school  
Reception intake: 30  
Nursery classes: full-time and part-time  
Breakfast club: Yes  
After school club: Yes

#### ADMISSION CRITERIA

See page 16. All applicants seeking a place at the school for September 2018 were offered.

### 6 DAUBENEY PRIMARY SCHOOL

Daubeney Road, E5 0EG

020 8985 4380

admin@daubeney.hackney.sch.uk  
www.daubeney.hackney.sch.uk

#### HEAD OF SCHOOL

Gregory Logan

#### EXECUTIVE HEADTEACHER

Janice Thomas

#### SCHOOL INFORMATION

Community school  
Reception intake: 90  
Nursery classes: full-time and part-time  
Breakfast club: Yes  
After school club: Yes

#### ADMISSION CRITERIA

See page 16. All applicants seeking a place at the school for September 2018 were offered.

**7 DE BEAUVOIR PRIMARY SCHOOL**

80 Tottenham Road, N1 4BS

020 7254 2517

admin@debeauvoir.hackney.sch.uk

www.debeauvoir.hackney.sch.uk

**HEADTEACHER**

Rebecca Mackenzie

**SCHOOL INFORMATION**

Community school

Reception intake: 60

Nursery classes: full-time and part-time

Breakfast club: Yes

After school club: Yes

**ADMISSION CRITERIA**

See page 16. All applicants seeking a place at the school for September 2018 were offered.

**8 GAINSBOROUGH COMMUNITY PRIMARY SCHOOL**

Berkshire Road, E9 5ND

020 8985 4622

admin@gainsborough.hackney.sch.uk

sch.uk

www.gainsborough.hackney.sch.uk

uk

**EXECUTIVE HEADTEACHER**

Jenna Clark

**SCHOOL INFORMATION**

Community school

Reception intake: 60

Nursery classes: full-time and part-time

Breakfast club: Yes

After school club: Yes

**ADMISSION CRITERIA**

See page 16. All applicants seeking a place at the school for September 2018 were offered.

**9 GAYHURST COMMUNITY SCHOOL**

Gayhurst Road, E8 3EN

020 7254 6138

admin@gayhurst.hackney.sch.uk

www.gayhurst.hackney.sch.uk

**ASSOCIATE HEADTEACHER**

Karen Pedro

**EXECUTIVE HEADTEACHER**

Louise Nichols

**SCHOOL INFORMATION**

Community school

Reception intake: 75

Nursery classes: full-time and part-time

Breakfast club: Yes

After school club: Yes

**ADMISSION CRITERIA**

See page 16. For information about how places were offered in 2018 see page 17.

**10 GRASMERE PRIMARY SCHOOL**

92 Albion Road, N16 9PD

020 7254 4564

info@grasmere.hackney.sch.uk

www.grasmere.hackney.sch.uk

**HEADTEACHER**

Nick Mallender

**SCHOOL INFORMATION**

Community school

Reception intake: 30

Nursery classes: full-time and part-time

Breakfast club: Yes

After school club: Yes

**ADMISSION CRITERIA**

See page 16. For information about how places were offered in 2018 see page 17.

**11 GRAZEBROOK PRIMARY SCHOOL**

Lordship Road, N16 0QP

020 8802 4051

GBoffice@newwavefederation.co.uk

co.uk

www.grazebrook.hackney.sch.uk

**HEADTEACHER**

Jessica Hutchison

**INTERIM EXECUTIVE HEADTEACHER**

Nicole Reid

**SCHOOL INFORMATION**

Community school

Reception intake: 60

Nursery classes: full-time and part-time

Breakfast club: Yes

After school club: Yes

**ADMISSION CRITERIA**

See page 16. For information about how places were offered in 2018 see page 17.



## HACKNEY NEW PRIMARY SCHOOL

81 Downham Road, N1 5TR

020 3019 3470

primary@hackneynewschool.org

hackneynewprimarieschool.org

### PRINCIPAL

Siobhan Campbell

### SCHOOL INFORMATION

Free school

Reception intake: 50

Breakfast club: Yes

After school club: Yes



## SUMMARY OF ADMISSION CRITERIA FOR 2019

The admissions policy for Hackney New Primary School is summarised below. If you want to apply for this school you should read the full admissions policy which is available online at [www.learningtrust.co.uk/admissionrules](http://www.learningtrust.co.uk/admissionrules)

In the event that Hackney New Primary is oversubscribed, after the admission of children with an Education Health and Care Plan naming the school, priority for admission will be given to those children who meet the criteria set out below, in priority order:

01. Looked after children and children who were previously looked after but immediately after being looked after became subject to an adoption, a child arrangements order or special guardianship order.
02. Children subject to a Child Protection Plan.
03. Siblings of children at Hackney New Primary School.
04. Siblings of children at Hackney New School.
05. Children with a social or medical need.
06. Children living nearest to the gates of Hackney New Primary School on Downham Road as measured in a straight line using a computerised distance measuring system. (see page 12 for more information)

Distance will be used as a tiebreaker with children living nearest the school having priority.

## HOW PLACES WERE OFFERED IN 2018

(data as at 16 April 2018)

| ADMISSION CRITERIA  | NUMBERS OF OFFERS MADE<br>(last offered distance in miles) |
|---|--|
| Education, Health and Care Plan/<br>Statement of Special Educational<br>Needs | 1  |
| 03. Siblings  | 11   |
| 05. Social/Medical needs  | 1  |
| 06. Distance  | 37 (0.539)   |
| <b>Number of applications received</b>  | <b>230</b>   |



**13 HALLEY HOUSE SCHOOL**

52–58 Arcola Street, E8 2DJ

020 7504 0548

office@halleyhouseschool.org.uk

www.halleyhouseschool.org.uk

**HEADTEACHER**

Claire Syms

**SCHOOL INFORMATION**

Free school

Reception intake: 60

Nursery classes: None

Breakfast club: Yes

After school club: Yes

**SUMMARY OF ADMISSION CRITERIA FOR 2019**

The admissions policy for Halley House School is summarised below. If you want to apply for this school you should read the full admissions policy which is available online at

**[www.learningtrust.co.uk/admissionrules](http://www.learningtrust.co.uk/admissionrules)**

In the event that Halley House is oversubscribed, after the admission of children with an Education Health and Care Plan naming the school, priority for admission will be given to those children who meet the criteria set out below, in priority order:

01. Looked after children and children who were previously looked after but immediately after being looked after became subject to an adoption, a child arrangements order or special guardianship order.
02. A child subject to a Child Protection Plan for whom Halley House is their nearest school.
03. Children with a sibling at the school at the time of admission.
04. Children of staff at the school.
05. Proximity to the school. This will be measured in a straight line from the address point of the pupil's home to the main entrance point of the school site using a computerised distance measuring system. (see page 12 for more information)

Distance will be used as a tiebreaker with children living nearest the school having priority. In the event that two or more children live at the same distance from the school, the tie breaker will be random allocation.

**HOW PLACES WERE OFFERED IN 2018**

All applicants seeking a place at the school for September 2018 were offered.



**14 HARRINGTON HILL  
PRIMARY SCHOOL**

Mount Pleasant Lane, E5 9JG

020 8806 7275

admin@harringtonhill.hackney.sch.  
uk

www.harringtonhill.hackney.sch.uk

**HEADTEACHER**

Kristie Barrett

**SCHOOL INFORMATION**

Community school

Reception intake: 60

Nursery classes: full-time and  
part-time

Breakfast club: Yes

After school club: Yes

**ADMISSION CRITERIA**

See page 16. All applicants  
seeking a place at the school for  
September 2018 were offered.

**15 HOLMLEIGH PRIMARY  
SCHOOL**

Dunsmure Road, N16 5PU

020 8802 7420

jpoole@holmleigh.hackney.sch.uk

www.holmleigh.hackney.sch.uk

**HEADTEACHER**

Kevin Ward

**SCHOOL INFORMATION**

Community school

Reception intake: 30

Nursery classes: full-time and  
part-time

Breakfast club: Yes

After school club: No

**ADMISSION CRITERIA**

See page 16. For information  
about how places were offered in  
2018 see page 17.

**16 HOLY TRINITY CE PRIMARY  
SCHOOL**

Beechwood Road, Dalston, E8 3DY

020 7254 1010

admin@holytrinity.hackney.sch.uk

www.holytrinity.hackney.sch.uk

**HEADTEACHER**

Yvonne Barnet

**EXECUTIVE PRINCIPAL**

Sian Davies

**SCHOOL INFORMATION**

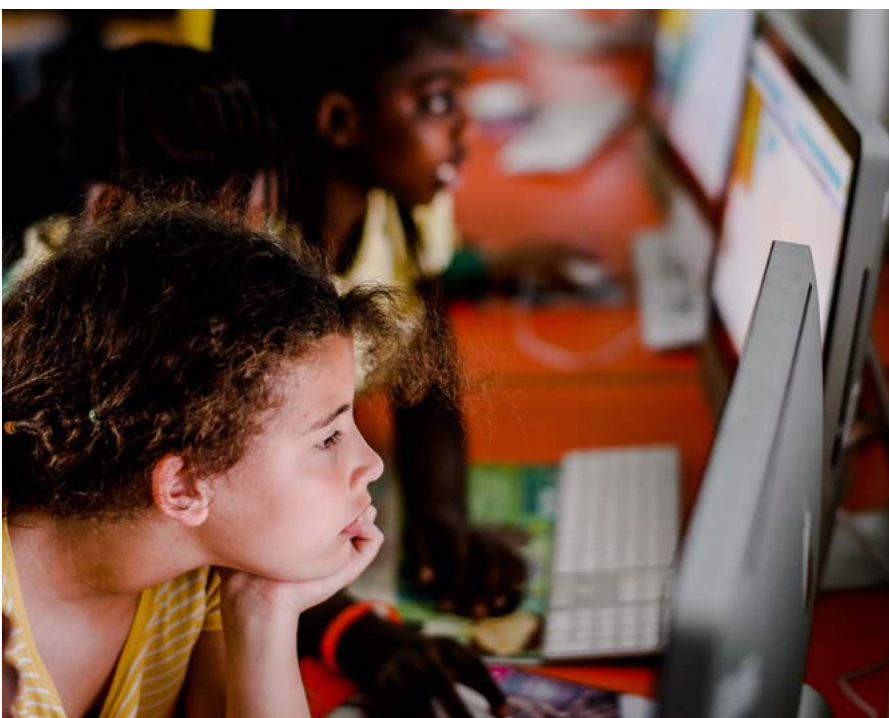
Voluntary aided Church of England  
school

Reception intake: 60

Nursery classes: full-time and  
part-time

Breakfast club: Yes

After school club: Yes



## SUMMARY OF ADMISSION CRITERIA FOR 2019

The admissions policy for Holy Trinity CE Primary School is summarised below. If you want to apply for this school you should read the full admissions policy which is available online at [www.learningtrust.co.uk/admissionrules](http://www.learningtrust.co.uk/admissionrules)

In the case of there being more applications than places available the governors will give 30 foundation places and 30 open places, or in the same ratio after places have been offered to looked after children and previously looked after children. The following criteria are in order:

01. Looked after children and children who were previously looked after but immediately after being looked after became subject to an adoption, a child arrangements order or special guardianship order.

### FOUNDATION PLACES

01. Children of parents who are practising Anglicans and who live in the parishes of Holy Trinity with St Phillip, Dalston and All Saints Haggerston. Attendance must be confirmed by the vicar of the Parish.
02. Children of parents who are practising members of a Christian denomination who live outside the parish for whom this is the nearest Church of England school. Attendance must be confirmed by the vicar of the Parish.

### OPEN PLACES

01. Children who have a sibling attending the school at the time they would attend.
02. Children of staff in either or both of the following circumstances:
  - a) where the member of staff has been employed at the school for two or more years at the time at which the application for admission to the school is made, and/or
  - b) the member of staff is recruited to fill a vacant post for which there is a demonstrable skill shortage.
03. Children whose acute medical or social needs justify the allocation of a place at the school.
04. Children who live in the parishes of Holy Trinity with St Phillip, Dalston and All Saints Haggerston and wish for their child to attend the school because of its Christian ethos.
05. Children who live outside the parishes of Holy Trinity with St Phillip, Dalston and All Saints Haggerston and wish for their child to attend the school because of its Christian ethos.
06. Children whose parents belong to another world faith in the community and wish to attend because of its religious traditions and who are in sympathy with this tradition who live within the parishes of Holy Trinity with St Phillip, Dalston and All Saints Haggerston.

Distance will be used as a tiebreaker with children living nearest the school having priority. In the event that two or more children live at the same distance from the school, the tie breaker will be random allocation.

## SUPPLEMENTARY INFORMATION FORM (SIF)

Applicants must complete an additional application form as well as applying online to the Hackney Learning Trust. The school's Supplementary Information form is available directly from the school or online at [www.learningtrust.co.uk/psif](http://www.learningtrust.co.uk/psif)

## HOW PLACES WERE OFFERED IN 2018

All applicants seeking a place at the school for September 2018 were offered.





**17 HOXTON GARDEN SCHOOL**

Ivy Street, N1 5JD

020 7739 8591

admin@hoxtongarden.hackney.sch.uk

www.hoxtongarden.hackney.sch.uk

**EXECUTIVE HEADTEACHER**

Stephen Hall

**ASSOCIATE HEADTEACHER**

Rachel Adams

**SCHOOL INFORMATION**

Community school  
Reception intake: 60  
Nursery classes: full-time and part-time  
Breakfast club: Yes  
After school club: Yes

**ADMISSION CRITERIA**

See page 16. All applicants seeking a place at the school for September 2018 were offered.

**18 JUBILEE SCHOOL**

Filey Avenue, N16 6NR

020 8806 5446

admin@jubilee.hackney.sch.uk  
www.jubilee.hackney.sch.uk

**HEADTEACHER**

Norma Hewins

**SCHOOL INFORMATION**

Community school  
Reception intake: 60  
Nursery classes: full-time and part-time  
Breakfast club: Yes  
After school club: Yes

**ADMISSION CRITERIA**

See page 16. For information about how places were offered in 2018 see page 17.

**19 KINGSMEAD PRIMARY SCHOOL**

Kingsmead Way, E9 5PP

020 8985 5779

admin@kingsmead.hackney.sch.uk  
www.kingsmead.hackney.sch.uk

**ASSOCIATE HEADTEACHER**

Evelyn Deeney

**EXECUTIVE HEADTEACHER**

Louise Nichols

**SCHOOL INFORMATION**

Community school  
Reception intake: 30  
Nursery classes: full-time and part-time  
Breakfast club: Yes  
After school club: Yes

**ADMISSION CRITERIA**

See page 16. For information about how places were offered in 2018 see page 17.

**20 LAURISTON PRIMARY SCHOOL**

Rutland Road, E9 7JS

020 8985 6331

lgroom@lauriston.hackney.sch.uk  
www.lauriston.hackney.sch.uk

**HEAD OF SCHOOL**

Louis Harris

**EXECUTIVE HEADTEACHER**

Janice Thomas

**SCHOOL INFORMATION**

Community school  
Reception intake: 60  
Nursery classes: full-time and part-time  
Breakfast club: Yes  
After school club: Yes

**ADMISSION CRITERIA**

See page 16. For information about how places were offered in 2018 see page 17.

**21 LONDON FIELDS PRIMARY SCHOOL**

Westgate Street, E8 3RL

020 7254 4330

londonfields4@gmail.com  
www.londonfields.hackney.sch.uk

**HEADTEACHER**

Caroline Tyson

**SCHOOL INFORMATION**

Community school  
Reception intake: 60  
Nursery classes: full-time and part-time  
Breakfast club: Yes  
After school club: Yes

**ADMISSION CRITERIA**

See page 16. For information about how places were offered in 2018 see page 17.





**22 LUBAVITCH BOYS SCHOOL**

135 Clapton Common, E5 9AE

0208 800 1044

admin@lubavitchschool.com

lubavitchjuniorboys.com

**HEADTEACHER**

Robert Leach

**SCHOOL INFORMATION**

Voluntary aided Jewish school

Reception intake: 30

Breakfast club: No

After school club: No

**SUMMARY OF ADMISSION CRITERIA FOR 2019**

The admissions policy for Lubavitch Boys School is summarised below. If you want to apply for this school you should read the full admissions policy which is available online at [www.learningtrust.co.uk/admissionrules](http://www.learningtrust.co.uk/admissionrules)

Priority in admission will be given to children who are Jewish according to Halochah (Orthodox Jewish Law). In the event of any dispute as to whether a child is Jewish, the decision of the Court of the Chief Rabbi of the United Kingdom is final.

Children with an Education, Health and Care Plan that names the school will be admitted to the school and will count against the planned admission number. If there are more applications than places available the Governing Body will admit pupils in accordance with specified oversubscription criteria in priority order:

01. Orthodox Jewish looked after children or Orthodox Jewish children who have been adopted (or subject to child arrangements orders or special guardianship orders) immediately following having been looked after.
02. Orthodox Jewish boys with a brother living at the same address who is currently on roll at the school and who will continue to be on the roll after the proposed admission.
03. Orthodox Jewish boys with a sister living at the same address who is currently on roll at Lubavitch Ruth Lunzer or Lubavitch House School (Senior Girls) and who will continue to be on roll after the proposed admission.
04. Other Orthodox Jewish boys.
05. Other looked after children or children who are adopted or became subject to child arrangements orders or special guardianship orders immediately following having been looked after.
06. Other Jewish boys.
07. Other boys.

**SUPPLEMENTARY INFORMATION FORM (SIF)**

Applicants must complete an additional application form as well as applying online to the Hackney Learning Trust. The school's Supplementary Information Form is available directly from the school or online at [www.learningtrust.co.uk/psif](http://www.learningtrust.co.uk/psif)

**HOW PLACES WERE OFFERED IN 2018**

All applicants seeking a place at the school for September 2018 were offered.

**23 LUBAVITCH RUTH LUNZER GIRLS PRIMARY SCHOOL**

Stamford Hill, N16 5RP

020 8800 0022

admin@lubavitch.hackney.sch.uk  
www.lubavitchgirlsprimaryschool.org

**INTERIM HEADTEACHER**

Ester Kessleman

**SCHOOL INFORMATION**

Voluntary aided Jewish school

Reception intake: 30

Nursery classes: full-time and part-time

Breakfast club: No

After school club: No



**SUMMARY OF ADMISSION CRITERIA FOR 2019**

The admissions policy for Lubavitch Ruth Lunzer Girls School is summarised below. If you want to apply for this school you should read the full admissions policy which is available online at [www.learningtrust.co.uk/admissionrules](http://www.learningtrust.co.uk/admissionrules)

Priority in admission will be given to children who are Jewish according to Halochah (Orthodox Jewish Law). In the event of any dispute as to whether a child is Jewish, the decision of the Court of the Chief Rabbi of the United Kingdom is final.

Children with an Education, Health and Care Plan that names the school will be admitted to the school and will count against the planned admission number. If there are more applications than places available the Governing Body will admit pupils in accordance with specified oversubscription criteria in priority order:

01. Orthodox Jewish looked after children or Orthodox Jewish children who have been adopted (or subject to child arrangements orders or special guardianship orders) immediately following having been looked after.
02. Orthodox Jewish girls with a sister living at the same address who is currently on roll at the school and who will continue to be on the roll after the proposed admission.
03. Orthodox Jewish girls with a sister on roll at the nursery attached to the school after the proposed admission.
04. Other Orthodox Jewish girls.
05. Other looked after children or children who have been adopted (or subject to child arrangements orders or special guardianship orders) immediately after having been looked after.
06. Other Jewish girls.
07. Other girls.

**SUPPLEMENTARY INFORMATION FORM (SIF)**

Applicants must complete an additional application form as well as applying online to the Hackney Learning Trust. The school's Supplementary Information Form is available directly from the school or online at [www.learningtrust.co.uk/psif](http://www.learningtrust.co.uk/psif)

**HOW PLACES WERE OFFERED IN 2018**

All applicants seeking a place at the school for September 2018 were offered.

**24 MANDEVILLE PRIMARY SCHOOL**

Oswald Street, E5 0BT

020 8986 5249

mdvoffice@mandeville.hackney.sch.uk  
sch.uk

www.mandeville.hackney.sch.uk

**ASSOCIATE HEADTEACHER**

Matthew Shapland

**EXECUTIVE HEADTEACHER**

Louise Nichols

**SCHOOL INFORMATION**

Community school

Reception intake: 60

Nursery classes: full-time and part-time

Breakfast club: Yes

After school club: Yes

**ADMISSION CRITERIA**

See page 16. All applicants seeking a place at the school for September 2018 were offered.

**25 MILLFIELDS COMMUNITY SCHOOL**

Hilsea Street, E5 0SH

020 8985 7898

info@millfields.hackney.sch.uk

www.millfields.hackney.sch.uk

**HEADTEACHER**

Jane Betsworth

**SCHOOL INFORMATION**

Community school

Reception intake: 90

Nursery classes: full-time and part-time

Breakfast club: Yes

After school club: Yes

**ADMISSION CRITERIA**

See page 16. For information about how places were offered in 2018 see page 17.

**26 MORNINGSIDE PRIMARY SCHOOL**

Chatham Place, E9 6LL

020 8985 5382

admin@morningside.hackney.sch.uk

morningside.hackney.sch.uk

**HEADTEACHER**

Janet Taylor

**EXECUTIVE PRINCIPAL**

Sian Davies

**SCHOOL INFORMATION**

Community school

Reception intake: 60

Nursery classes: full-time and part-time

Breakfast club: Yes

After school club: Yes

**ADMISSION CRITERIA**

See page 16. All applicants seeking a place at the school for September 2018 were offered.





**27 MOSSBOURNE PARKSIDE ACADEMY**

Sigdon Road, E8 1AS

020 8618 1300

enquiries@mpa.mossbourne.org

www.mpa.mossbourne.org

**PRINCIPAL**

Tim Jackson

**CEO**

Peter Hughes

**SCHOOL INFORMATION**

Academy trust

Reception intake: 60

Nursery classes: full-time and part-time

Breakfast club: Yes

After school club: No



**SUMMARY OF ADMISSION CRITERIA FOR 2019**

The admissions policy for Mossbourne Parkside Academy is summarised below. If you want to apply for this school you should read the full admissions policy which is available online at [www.learningtrust.co.uk/admissionrules](http://www.learningtrust.co.uk/admissionrules)

In the event that Mossbourne Parkside Academy is oversubscribed, after the admission of children with an Education Health and Care Plan naming the school, priority for admission will be given to those children who meet the criteria set out below, in priority order:

01. Looked after children and children who were previously looked after but immediately after being looked after became subject to an adoption, a child arrangements order or special guardianship order.
02. Children identified by Hackney Learning Trust with a Child Protection Plan for whom the academy is their nearest school.
03. Children with a sibling on roll at the academy at the time of application.
04. Children whose acute medical or social need justifies a place at the academy. It is the responsibility of the parent/carer of the child to provide supporting professional evidence (for example a GP's or social worker's letter) which demonstrates why the child should be given a place at the academy rather than any other school.
05. Children of staff who work at Mossbourne Parkside Academy where the academy reasonably considers a member of staff has been recruited for a position for which there is a demonstrable skill shortage.
06. All remaining places will then be allocated amongst remaining applicants admitting first, those who live closest to the school.

Random allocation will be used as a tiebreaker.

**HOW PLACES WERE OFFERED IN 2018**

(data as at 16 April 2018)

| ADMISSION CRITERIA                     | NUMBERS OF OFFERS MADE (last offered distance in miles) |
|--|---|
| 03. Siblings                           | 26  |
| 06. Distance                           | 34 (0.295)  |
| <b>Number of applications received</b> | <b>166</b>  |



## 28 MOSSBOURNE RIVERSIDE ACADEMY

East Bay Lane, E15 2GW

020 8173 0650

enquiries@mra.mossbourne.org

www.mra.mossbourne.org

### PRINCIPAL

Amy Wood

### EXECUTIVE PRINCIPAL

Peter Hughes

### SCHOOL INFORMATION

Academy trust

Reception intake: 90

Nursery classes: None

Breakfast club: Yes

After school club: Yes



## SUMMARY OF ADMISSION CRITERIA FOR 2019

The admissions policy for Mossbourne Riverside Academy is summarised below. If you want to apply for this school you should read the full admissions policy which is available online at [www.learningtrust.co.uk/admissionrules](http://www.learningtrust.co.uk/admissionrules)

In the event that Mossbourne Riverside Academy is oversubscribed, after the admission of children with an Education Health and Care Plan naming the school, priority for admission will be given to those children who meet the criteria set out below, in priority order:

01. Looked after children and children who were previously looked after but immediately after being looked after became subject to an adoption, a child arrangements order or special guardianship order.
02. Children identified by Hackney Learning Trust with a Child Protection Plan for whom the academy is their nearest school.
03. Children with a sibling on roll at the academy at the time of application.
04. Children whose acute medical or social need justifies a place at the academy. It is the responsibility of the parent/carer of the child to provide supporting professional evidence (for example a GP's or social worker's letter) which demonstrates why the child should be given a place at the academy rather than any other school.
05. Children of staff who work at Mossbourne Riverside Academy where the academy reasonably considers a member of staff has been recruited for a position for which there is a demonstrable skill shortage.
06. Children living nearest to Latitude 51.547042, Longitude -0.017364235 (on the River Lea, east of Waterden Road). The school is one of three planned schools as part of the development of the Queen Elizabeth Olympic Park. As part of the planning, this school was identified to cater for children living in a development called Chohham Manor. The point chosen is half way between the school entrance and Chobham Manor.

Random allocation will be used as a tiebreaker.

### HOW PLACES WERE OFFERED IN 2018

All applicants seeking a place at the school for September 2018 were offered.

---

**29 NIGHTINGALE PRIMARY SCHOOL**

Rendlesham Road, E5 8PH

020 8985 4259

eibrahim@nightingale.hackney.sch.uk

www.nightingale.hackney.sch.uk

---

**HEADTEACHER**

Abigail Hopper

---

**SCHOOL INFORMATION**

Community school

Reception intake: 30

Nursery classes: full-time and part-time

Breakfast club: Yes

After school club: Yes

---

**ADMISSION CRITERIA**

See page 16. All applicants seeking a place at the school for September 2018 were offered.



## 30 NORTHWOLD PRIMARY SCHOOL

Northwold Road, E5 8RN

020 8806 6352

office@northwold.amayatrust.com

www.northwoldschool.com

### HEADTEACHER

Shelly-Ann Goulbourne

### SCHOOL INFORMATION

Academy trust

Reception intake: 60

Nursery classes: full-time only

Breakfast club: Yes

After school club: Yes



## SUMMARY OF ADMISSION CRITERIA FOR 2019

The admissions policy for Northwold Primary School is summarised below. If you want to apply for this school you should read the full admissions policy which is available online at [www.learningtrust.co.uk/admissionrules](http://www.learningtrust.co.uk/admissionrules)

In the event that Northwold Primary School is oversubscribed, after the admission of children with an Education Health and Care Plan naming the school, priority for admission will be given to those children who meet the criteria set out below, in priority order:

01. Looked after children and children who were previously looked after but immediately after being looked after became subject to an adoption, a child arrangements order or special guardianship order.
02. Children with exceptional medical needs that necessitates a place at the school.
03. Children with a brother or sister at the school who will still be attending when at the time of admission.
04. Children of teachers in either or both of the following circumstances subject to there being no more than one teacher's child in each class:
  - a) where the teacher has been employed at the school for two years
  - b) the teacher has been recruited to fill a vacant post for which there is a demonstrable skills shortage.
05. Children living nearest to the main entrance of the school as measured in a straight line using a GIS computerised batch distance measuring mapping system.

Distance will be used as a tiebreaker with children living nearest the school having priority. In the event that two or more children live at the same distance from the school, the tie breaker will be random allocation.

## HOW PLACES WERE OFFERED IN 2018

(data as at 16 April 2018)

| ADMISSION CRITERIA                     | NUMBERS OF OFFERS MADE<br>(last offered distance in miles) |
|--|--|
| 03. Siblings                           | 19   |
| 06. Distance                           | 41(1.444)  |
| <b>Number of applications received</b> | <b>199</b>   |



---

**31 ORCHARD PRIMARY SCHOOL**

Holcroft Road, E9 7BB

020 8985 7785

adminorchard@vs.hackney.sch.uk

www.orchard.hackney.sch.uk

---

**HEADTEACHER**

Rachel Davie

---

**EXECUTIVE HEADTEACHER**

Stephen Hall

---

**SCHOOL INFORMATION**

Community school

Reception intake: 90

Nursery classes: full-time and part-time

Breakfast club: Yes

After school club: Yes

---

**ADMISSION CRITERIA**

See page 16. For information about how places were offered in 2018 see page 17.





## 32 OUR LADY AND ST JOSEPH'S RC PRIMARY SCHOOL

Buckingham Road, N1 4JB

020 7254 7353

admin@olsj.hackney.sch.uk

www.olsjschool.net

### HEADTEACHER

Sean Flood

### SCHOOL INFORMATION

Voluntary aided Catholic school

Reception intake: 30

Nursery classes: full-time and part-time

Breakfast club: Yes

After school club: Yes

## SUMMARY OF ADMISSION CRITERIA FOR 2019

The admissions policy for Our Lady and St Joseph's RC Primary School is summarised below. If you want to apply for this school you should read the full admissions policy which is available online at [www.learningtrust.co.uk/admissionrules](http://www.learningtrust.co.uk/admissionrules)

In the event that Our Lady and St Joseph's RC Primary School is oversubscribed, after the admission of children with an Education Health and Care plan naming the school, priority for admission will be given to those children who meet the criteria set out below, in priority order:

01. Catholic looked after children and Catholic children who have been adopted or made subject to child arrangements orders or special guardianship orders immediately after being looked after.
02. Baptised Catholic children with a Certificate of Catholic Practice who will have a brother or sister attending a reception, infant or junior class in Our Lady and St Joseph school at the proposed date of admission.
03. Baptised children of staff who have been working in the school continuously for at least two years at the date of application (15/01/2019).
04. Baptised children with a Certificate of Catholic Practice whose parents/legal guardians are resident in the Hackney Catholic Deanery Parish of Our Lady and St Joseph, Kingsland.
05. Other baptised children with a Certificate of Catholic Practice.
06. Other baptised Catholic children.
07. Other looked after children and children who have been adopted or made subject to child arrangements orders or special guardianship orders immediately after being looked after.
08. Children of families who are Catechumens or members of an Eastern Christian Church.
09. Children from families of other Christian denominations whose application is supported by a letter from a minister of religion confirming membership of the faith community.
10. Any other children.

Distance will be used as a tiebreaker with children living nearest the school having priority.

### SUPPLEMENTARY INFORMATION FORMS (SIF)

Applicants must complete additional application forms as well as applying online to the Hackney Learning Trust. The school's Supplementary Information Form and the Certificate of Catholic Practice are both available directly from the school or can be downloaded at [www.learningtrust.co.uk/psif](http://www.learningtrust.co.uk/psif) or from the school website. Applicants must also supply an original (or certified copy) of the child's Baptismal certificate.

Supplementary Information Forms must be returned directly to the school by 15 January 2019. Failure to return the forms by this date mean the Governing Body may be unable to consider your application fully and it is unlikely that your child will be offered a place.

**HOW PLACES WERE OFFERED IN 2018**

(data as at 16 April 2018)

| ADMISSION CRITERIA                                  | NUMBERS OF OFFERS MADE<br>(last offered distance in miles) |
|---|--|
| 02. Baptised Catholic children with CCP and sibling | 16   |
| 04. Baptised Catholic children with CCP in Parish   | 11   |
| 05. Other baptised Catholic children with CCP       | 2 (0.176)  |
| 08. Children of Christian families                  | 1  |
| <b>Number of applications received</b>              | <b>71</b>  |



**33 PARKWOOD PRIMARY SCHOOL**

Queens Drive, N4 2HQ

020 8802 5366

admin@parkwood.hackney.sch.uk

www.parkwood.hackney.sch.uk

**HEADTEACHER**

Paul Thomas

**SCHOOL INFORMATION**

Community school

Reception intake: 30

Nursery classes: full-time and part-time

Breakfast club: Yes

After school club: No

**ADMISSION CRITERIA**

See page 16. For information about how places were offered in 2018 see page 17.

**34 PRINCESS MAY PRIMARY SCHOOL**

Princess May Road, N16 8DF

020 7254 1589

admin@princessmay.hackney.sch.uk

www.princessmay.hackney.sch.uk

**HEADTEACHER**

Kevin Reynolds

**SCHOOL INFORMATION**

Community school

Reception intake: 60

Nursery classes: full-time and part-time

Breakfast club: Yes

After school club: Yes

**ADMISSION CRITERIA**

See page 16. All applicants seeking a place at the school for September 2018 were offered.

**35 QUEENSBRIDGE PRIMARY SCHOOL**

Queensbridge Road, E8 4ET

020 7254 1186

admin@queensbridge.hackney.sch.uk

sch.uk

www.queensbridge.hackney.sch.uk

**EXECUTIVE HEADTEACHER**

Sarah Bailey OBE

**SCHOOL INFORMATION**

Community school

Reception intake: 60

Nursery classes: full-time and part-time

Breakfast club: Yes

After school club: Yes

**ADMISSION CRITERIA**

See page 16. For information about how places were offered in 2018 see page 17.

**36 RANDAL CREMER PRIMARY SCHOOL**

Ormsby Road, E2 8JG

020 7739 8162

admin@randalcremer.hackney.sch.uk

uk

www.randalcremer.hackney.sch.uk

**HEADTEACHER**

Jo Riley

**SCHOOL INFORMATION**

Community school

Reception intake: 60

Nursery classes: full-time and part-time

Breakfast club: Yes

After school club: Yes

**ADMISSION CRITERIA**

See page 16. All applicants seeking a place at the school for September 2018 were offered.

**37 RUSHMORE PRIMARY SCHOOL**

Elderfield Road, E5 0LE

020 8985 1142 / 3175

info@rushmore.hackney.sch.uk

www.rushmore.hackney.sch.uk

**HEADTEACHER**

Jim O'Shea

**SCHOOL INFORMATION**

Community school

Reception intake: 60

Nursery classes: full-time and part-time

Breakfast club: Yes

After school club: Yes

**ADMISSION CRITERIA**

See page 16. For information about how places were offered in 2018 see page 17.

**38 SEBRIGHT SCHOOL**

Audrey Street, E2 8QH

020 7739 6531

admin@sebright.hackney.sch.uk

www.sebright.hackney.sch.uk

**HEAD OF SCHOOL**

James Green

**EXECUTIVE HEADTEACHER**

Janice Thomas

**SCHOOL INFORMATION**

Community school

Reception intake: 60

Nursery classes: full-time and part-time

Breakfast club: Yes

After school club: Yes

**ADMISSION CRITERIA**

See page 16. All applicants seeking a place at the school for September 2018 were offered.

**39 SHACKLEWELL PRIMARY SCHOOL**

Shacklewell Row, E8 2EA

020 7254 1415

Swoffice@newwavefederation.co.uk

www.shacklewell.hackney.sch.uk

**INTERIM HEADTEACHER**

Rory McGrath

**INTERIM EXECUTIVE HEADTEACHER**

Nicole Reid

**SCHOOL INFORMATION**

Community school

Reception intake: 60

Nursery classes: full-time and part-time

Breakfast club: Yes

After school club: No

**ADMISSION CRITERIA**

See page 16. For information about how places were offered in 2018 see page 17.

**40 SHOREDITCH PARK PRIMARY SCHOOL**

113 Bridport Place, N1 5JN

020 7739 7973

admin@shoreditchpark.hackney.sch.uk

www.shoreditchpark.hackney.sch.uk

**HEADTEACHER**

Penny Smith

**SCHOOL INFORMATION**

Community school

Reception intake: 60

Nursery classes: full-time and part-time

Breakfast club: Yes

After school club: Yes

**ADMISSION CRITERIA**

See page 16. For information about how places were offered in 2018 see page 17.

## 41 SIMON MARKS JEWISH PRIMARY SCHOOL

75 Cazenove Road, N16 6PD

020 8806 6048

info@simonmarks.hackney.sch.uk

www.simonmarks.hackney.sch.uk

### INTERIM EXECUTIVE HEADTEACHER

Gulcan Metin

### SCHOOL INFORMATION

Voluntary aided Jewish school

Reception intake: 30

Nursery classes: full-time and part-time

Breakfast club: Yes

After school club: Yes

## SUMMARY OF ADMISSION CRITERIA FOR 2019

The admissions policy for Simon Marks Jewish Primary School is summarised below. If you want to apply for this school you should read the full admissions policy which is available online at [www.learningtrust.co.uk/admissionrules](http://www.learningtrust.co.uk/admissionrules)

Children with an Education, Health and Care Plan that names the school will be admitted to the school and will count against the planned admission number. If there are more applications than places available the Governing Body will admit pupils in accordance with specified oversubscription criteria in priority order:

01. Looked after children with a Certificate of Religious Practise (CRP) or children who were previously looked after but immediately after being looked after became subject to an adoption, a child arrangements order or special guardianship order.
02. Children with a CRP subject to a Child Protection Plan.
03. Children with a CRP for whom there is a demonstrable need on the grounds of their acute medical or social need.
04. Children of a member of staff, employed at the school for at least two years or who have been recruited to fill a post where there is a skill shortage on the date they are due to start, with a CRP.
05. Children with a CRP with a sibling on the roll of the school at the time of the proposed admission.
06. Children with a CRP on the roll of the Simon Marks nursery.
07. Other Children with a CRP.
08. Other looked after children or children who were previously looked after but immediately after being looked after became subject to an adoption, a child arrangements order or special guardianship order.
09. Other children subject to a Child Protection Plan.
10. Other children for whom there is a demonstrable need on the grounds of their acute medical or social need.
11. Other children of a member of staff, employed at the school for at least two years or who have been recruited to fill a post where there is a skill shortage on the date they are due to start.
12. Other children with a sibling on the roll of the school at the time of the proposed admission.
13. Other children currently on the roll of the Simon Marks nursery.
14. All other applicants

Distance will be used as a tiebreaker with children living nearest the school having priority. In the event that two or more children live at the same distance from the school, the tie breaker will be random allocation.



## SUPPLEMENTARY INFORMATION FORMS (SIF)

Applicants must complete additional application forms as well as applying online to the Hackney Learning Trust. The school's Supplementary Information Form (SIF) and the Certificate of Religious Practice (CRP) are both available directly from the school or can be downloaded at [www.learningtrust.co.uk/psif](http://www.learningtrust.co.uk/psif) or from the school website. Supplementary Information Forms must be returned directly to the school by 15 January 2019.

## HOW PLACES WERE OFFERED IN 2018

All applicants seeking a place at the school for September 2018 were offered.

### 42 SIR THOMAS ABNEY SCHOOL

Fairholt Road, N16 5ED

020 8800 1411

admin@sirthomasabney.hackney.sch.uk

www.sirthomasabney.hackney.sch.uk

#### HEADTEACHER

Geraldine Fitzmaurice

#### SCHOOL INFORMATION

Community school

Reception intake: 60

Nursery classes: full-time and part-time

Breakfast club: Yes

After school club: Yes

#### ADMISSION CRITERIA

See page 16. All applicants seeking a place at the school for September 2018 were offered.

### 43 SOUTHWOLD SCHOOL

Detmold Road, E5 9NL

020 8806 5201

adminsouthwold@vs.hackney.sch.uk

www.southwold.hackney.sch.uk

#### HEADTEACHER

Stephen O'Brien

#### EXECUTIVE HEADTEACHER

Stephen Hall

#### SCHOOL INFORMATION

Community school

Reception intake: 60

Nursery classes: full-time and part-time

Breakfast club: Yes

After school club: Yes

#### ADMISSION CRITERIA

See page 16. All applicants seeking a place at the school for September 2018 were offered.

### 44 SPRINGFIELD COMMUNITY PRIMARY SCHOOL

Castlewood Road, N16 6DH

020 8800 9007

admin@springfield.hackney.sch.uk

www.springfield.hackney.sch.uk

#### HEADTEACHER

Fiona Judge

#### EXECUTIVE PRINCIPAL

Sian Davies

#### SCHOOL INFORMATION

Community school

Reception intake: 30

Nursery classes: full-time and part-time

Breakfast club: Yes

After school club: Yes

#### ADMISSION CRITERIA

See page 16. All applicants seeking a place at the school for September 2018 were offered.

**45 ST DOMINIC'S CATHOLIC  
PRIMARY SCHOOL**

Ballance Road, E9 5SR

020 8985 0995

admin@stdominics.hackney.sch.uk

www.stdominics.hackney.sch.uk

**HEADTEACHER**

Deirdre Finan

**SCHOOL INFORMATION**

Voluntary aided Catholic school

Reception intake: 60

Nursery classes: full-time and  
part-time

Breakfast club: Yes

After school club: Yes

**SUMMARY OF ADMISSION CRITERIA FOR 2019**

The admissions policy for St Dominic's Catholic Primary School is summarised below. If you want to apply for this school you should read the full admissions policy which is available online at

[www.learningtrust.co.uk/admissionrules](http://www.learningtrust.co.uk/admissionrules)

Children for whom the school has been named in an Education, Health and care plan will be admitted to the school and will count against the planned admission number

Children with an Education, Health and Care Plan that names the school will be admitted to the school and will count against the planned admission number. If there are more applications than places available the Governing Body will admit pupils in accordance with specified oversubscription criteria in priority order:

01. Catholic looked after children or Catholic children who have been adopted or made subject to child arrangements orders or special guardianship orders.
02. Catholic children whose parents/legal guardians are resident in the Hackney Catholic Deanery Parishes of the Immaculate Heart of Mary and St Dominic (Homerton) and St Jude's (Clapton Park).
03. Other Catholic Children.
04. Other looked after children or children who have been adopted or made subject to child arrangements orders or special guardianship orders.
05. Children of other Christian denominations whose parents wish them to have a Catholic education and whose application a Priest, Minister or Church Leader supports.
06. Any other applicants.

Within each of the criterion above first priority will be given to children who will have a brother or sister attending the school at the proposed date of admission. Second priority will be given to children of members of staff, where the member of staff has been employed at the school for at least two years at the proposed date of admission. The governing body will increase to top priority within a criterion where compelling evidence is provided at the time of application of an exceptional social, medical or pastoral need of the child which can only be met at St Dominic's Catholic Primary School. Distance will be used as a tiebreaker with children living nearest the school having priority.

**SUPPLEMENTARY INFORMATION FORM (SIF)**

Applicants must complete an additional application form as well as applying online to the Hackney Learning Trust. The school's Supplementary Information Form is available directly from the school or online at [www.learningtrust.co.uk/psif](http://www.learningtrust.co.uk/psif) Applicants must also supply an original (or certified copy) of the child's Baptismal certificate.

**HOW PLACES WERE OFFERED IN 2018**

All applicants seeking a place at the school for September 2018 were offered.

## 46 ST JOHN & ST JAMES CE PRIMARY SCHOOL

Isabella Road, E9 6DX

020 8985 2045

office@johnjames.hackney.sch.uk

www.johnjames.hackney.sch.uk

### HEAD OF SCHOOL

Jo Smith

### EXECUTIVE HEADTEACHER

Jenna Clark

### EXECUTIVE PRINCIPAL

Sian Davies

### SCHOOL INFORMATION

Voluntary aided Church of England school

Reception intake: 30

Nursery classes: full-time and part-time

Breakfast club: Yes

After school club: Yes

## SUMMARY OF ADMISSION CRITERIA FOR 2019

The admissions policy for St John & St James CE Primary School is summarised below. If you want to apply for this school you should read the full admissions policy which is available online at [www.learningtrust.co.uk/admissionrules](http://www.learningtrust.co.uk/admissionrules)

Children for whom the school has been named in an Education, Health and care plan will be admitted to the school and will count against the planned admission number

In the case of there being more applications than places available the governors will give 15 foundation places and 15 open places, or in the same ratio after places have been offered to looked after children and previously looked after children. The following criteria are in order:

01. Looked after children and children who were previously looked after but immediately after being looked after became subject to an adoption, a child arrangements order or special guardianship order.

### FOUNDATION PLACES

02. Children whose parents attend at least twice a month for 12 months at either the church of St John at Hackney, St James' Clapton or St Luke's and who live locally within the parishes of St John's Hackney, St James' Clapton, St Luke's and the Hackney Marsh Team and St Luke's Homerton.

### OPEN PLACES

03. Children who have a sibling attending the school at the time they would attend.
04. Children of staff in either or both of the following circumstances:
  - a) where the member of staff has been employed at the school for two or more years at the time at which the application for admission to the school is made, and/or
  - b) the member of staff is recruited to fill a vacant post for which there is a demonstrable skill shortage.
05. Children who live locally within the parishes of St John's Hackney, St James' Clapton, St Luke's and the Hackney Marsh Team and St Luke's Homerton.
06. Children whose acute medical or social needs justify the allocation of a place at the school.
07. Children who live outside the parishes of St John's Hackney, St James' Clapton, St Luke's and the Hackney Marsh Team and St Luke's Homerton.

Distance will be used as a tiebreaker with children living nearest the school having priority. In the event that two or more children live at the same distance from the school, the tie breaker will be random allocation.



**SUPPLEMENTARY INFORMATION FORM (SIF)**

Applicants must complete an additional application form as well as applying online to the Hackney Learning Trust. The school's Supplementary Information Form (SIF) is available directly from the school or online at [www.learningtrust.co.uk/psif](http://www.learningtrust.co.uk/psif)

**HOW PLACES WERE OFFERED IN 2018**

(data as at 16 April 2018)

| ADMISSION CRITERIA                           | NUMBERS OF OFFERS MADE<br>(last offered distance in miles) |
|--|--|
| <b>Foundation places</b>                     |  |
| 02. Regularly attend and live in Parish area | 2  |
| <b>Open places</b>                           |  |
| 03. Siblings                                 | 4  |
| 04. Children of staff                        | 2  |
| 05. In Parish area                           | 22 (0.408)   |
| <b>Number of applications received</b>       | <b>80</b>  |



## 47 ST JOHN OF JERUSALEM CE PRIMARY SCHOOL

Kingshold Road, E9 7JF

020 8985 0730

admin@st-johnjerusalem.hackney.sch.uk

www.st-johnjerusalem.hackney.sch.uk

### HEADTEACHER

Asarena Simon

### SCHOOL INFORMATION

Voluntary aided Church of England school

Reception intake: 30

Nursery classes: full-time and part-time

Breakfast club: Yes

After school club: No

## SUMMARY OF ADMISSION CRITERIA FOR 2019

The admissions policy for St John of Jerusalem CE Primary School is summarised below. If you want to apply for this school you should read the full admissions policy which is available online at [www.learningtrust.co.uk/admissionrules](http://www.learningtrust.co.uk/admissionrules)

Children with an Education, Health and Care Plan that names the school will be admitted to the school and will count against the planned admission number. If there are more applications than places available the Governing Body will admit pupils in accordance with specified oversubscription criteria in priority order:

01. Looked after children and children who were previously looked after but immediately after being looked after became subject to an adoption, a child arrangements order or special guardianship order.
02. Children whose parent/s or carer/s, are regular worshippers (at least once every three weeks, for one year) at St John of Jerusalem Church.
03. Children who have siblings attending St John of Jerusalem CE Primary School, and will continue to do so at the time of attendance.
04. Children whose parent/s or carer/s are regular worshippers (at least once every three weeks, for one year) at a nearby Anglican church, and for whom this is their nearest church school.
05. Children whose parent/s or carer/s are regular worshippers (at least once every three weeks, for one year) at a nearby Christian church, and for whom this is their nearest church school.
06. Children whose parent/s or carer/s are regular worshippers (at least once every three weeks, for one year) of other faiths/beliefs, and for whom this is their nearest church school.
07. Children who live nearest to the main entrance of the school.

Distance will be used as a tiebreaker with children living nearest the school having priority. In the event that two or more children live at the same distance from the school, the tie breaker will be random allocation.

### SUPPLEMENTARY INFORMATION FORM (SIF)

Applicants must complete an additional application form as well as applying online to the Hackney Learning Trust. The school's Supplementary Information Form (SIF) is available directly from the school or online at [www.learningtrust.co.uk/psif](http://www.learningtrust.co.uk/psif)

### HOW PLACES WERE OFFERED IN 2018

All applicants seeking a place at the school for September 2018 were offered.

## 48 ST JOHN THE BAPTIST CE PRIMARY SCHOOL

Cron dall Street, N1 6JG

020 7739 4902

office@st-john.hackney.sch.uk

www.st-john.hackney.sch.uk

### HEADTEACHER

Toni Mason

### EXECUTIVE PRINCIPAL

Sian Davies

### SCHOOL INFORMATION

Voluntary aided Church of England school

Reception intake: 60

Nursery classes: full-time and part-time

Breakfast club: Yes

After school club: No



## SUMMARY OF ADMISSION CRITERIA FOR 2019

The admissions policy for St John the Baptist CE Primary School is summarised below. If you want to apply for this school you should read the full admissions policy which is available online at [www.learningtrust.co.uk/admissionrules](http://www.learningtrust.co.uk/admissionrules)

In the case of there being more applications than places available the governors will give 31 foundation places and 29 open places, or in the same ratio after places have been offered to looked after children and previously looked after children. The following criteria are in order:

01. Looked after children and children who were previously looked after but immediately after being looked after became subject to an adoption, a child arrangements order or special guardianship order.

### FOUNDATION PLACES

02. Children of parents who are practising Anglicans and attend St John the Baptist Church, Hoxton and St Leonard's Church, Shoreditch.
03. Children who have a sibling at the school at the time of their proposed entry.
04. Children whose parents are practising Anglicans and attend Holy Trinity Church Hoxton; St Anne's Church, Hoxton; St Chad's Church, Haggerston; and St Peter's Church, De Beauvoir.
05. Children whose parents are practising members and attend other Christian denominations.

### OPEN PLACES

06. Children whose acute medical or social needs justify the allocation of a place at the school.
07. Children whose parents belong to another world faith or no faith and wish to attend St John the Baptist School because of its Christian tradition and education based on Christian values.

Within each of the criterion above first priority will be given to children who will have a brother or sister attending the school at the proposed date of admission. Distance will be used as a tiebreaker with children living nearest the school having priority. In the event that two or more children live at the same distance from the school, the tie breaker will be random allocation.

### SUPPLEMENTARY INFORMATION FORM (SIF)

Applicants must complete an additional application form as well as applying online to the Hackney Learning Trust. The school's Supplementary Information Form (SIF) is available directly from the school or online at [www.learningtrust.co.uk/psif](http://www.learningtrust.co.uk/psif)

### HOW PLACES WERE OFFERED IN 2018

All applicants seeking a place at the school for September 2018 were offered.



## 49 ST MARY'S CE PRIMARY SCHOOL

Barn Street, N16 0JT

020 8800 2645

admin-office@stmarys.hackney.sch.uk

www.st-marys.hackney.sch.uk

### HEADTEACHER

Jane O'Brien

### SCHOOL INFORMATION

Voluntary aided Church of England school

Reception intake: 30

Nursery classes: full-time and part-time

Breakfast club: Yes

After school clubs: Yes



## SUMMARY OF ADMISSION CRITERIA FOR 2019

The admissions policy for St Mary's CE Primary School is summarised below. If you want to apply for this school you should read the full admissions policy which is available online at [www.learningtrust.co.uk/admissionrules](http://www.learningtrust.co.uk/admissionrules)

Children with an Education, Health and Care Plan that names the school will be admitted to the school and will count against the planned admission number. If there are more applications than places available the Governing Body will admit pupils in accordance with specified oversubscription criteria in priority order:

01. Looked after children and children who were previously looked after but immediately after being looked after became subject to an adoption, a child arrangements order or special guardianship order.
02. Children subject to a Child Protection Plan for whom this is the nearest school.
03. Children whose parents are regular worshippers at St Mary's Church, Stoke Newington. Regular worship is attendance at least once a month at services for a period of at least one year prior to application. You must complete the supplementary information form - see below.
04. Children whose parents are regular worshippers (as detailed above) at other Christian churches and who reside within the parish boundary of St Mary's Church, Stoke Newington. Children who have access to a local denominational school of their own faith will not be considered under this category. You must complete the supplementary information form - see below.
05. Children who have a sibling at the school at the time of potential attendance (not application).
06. Children of members of staff who have worked at the school for at least two years prior to the academic year for which they are applying.
07. Children who live nearest to the centre of the school.

Distance will be used as a tiebreaker with children living nearest the school having priority. In the event that two or more children live at the same distance from the school, the tie breaker will be random allocation.

### SUPPLEMENTARY INFORMATION FORM (SIF)

Applicants must complete an additional application form as well as applying online to the Hackney Learning Trust. The school's Supplementary Information Form (SIF) is available directly from the school or online at [www.learningtrust.co.uk/psif](http://www.learningtrust.co.uk/psif)

### HOW PLACES WERE OFFERED IN 2018

All applicants seeking a place at the school for September 2018 were offered.



## ST MATTHIAS CE PRIMARY SCHOOL

Wordsworth Road, N16 8DD

020 7254 1148

admin@st-matthias.hackney.sch.uk

www.st-matthias.hackney.sch.uk

### HEADTEACHER

Orlene Badu

### EXECUTIVE PRINCIPAL

Sian Davies

### SCHOOL INFORMATION

Voluntary aided Church of England school

Reception intake: 30

Nursery classes: full-time and part-time

Breakfast club: Yes

After school club: Yes



## SUMMARY OF ADMISSION CRITERIA FOR 2019

The admissions policy for St Matthias CE Primary School is summarised below. If you want to apply for this school you should read the full admissions policy which is available online at [www.learningtrust.co.uk/admissionrules](http://www.learningtrust.co.uk/admissionrules)

Children with an Education, Health and Care Plan that names the school will be admitted to the school and will count against the planned admission number. If there are more applications than places available the Governing Body will admit pupils in accordance with specified oversubscription criteria in priority order:

01. Looked after children and children who were previously looked after but immediately after being looked after became subject to an adoption, a child arrangements order or special guardianship order.
02. Children who have brothers and sisters on the current roll at the time of attendance.
03. Children whose parent(s) regularly worship at St Matthias Church.
04. Children whose parent(s) are committed members of, and regularly worship in local churches and chapels of other Christian denominations.
05. Children living within the Parish of St. Matthias. Information about which streets and residences are included in the Parish of St Matthias can be found from the Church Finder section of the Diocese of London website: [www.london.anglican.org/directory](http://www.london.anglican.org/directory)
06. Children living outside the Parish of St Matthias.

Distance will be used as a tiebreaker with children living nearest the school having priority. In the event that two or more children live at the same distance from the school, the tie breaker will be random allocation.

### SUPPLEMENTARY INFORMATION FORM (SIF)

Applicants must complete an additional application form as well as applying online to the Hackney Learning Trust. The school's Supplementary Information Form (SIF) is available directly from the school or online at [www.learningtrust.co.uk/psif](http://www.learningtrust.co.uk/psif)

### HOW PLACES WERE OFFERED IN 2018

All applicants seeking a place at the school for September 2018 were offered.

## ST MONICA'S CATHOLIC PRIMARY SCHOOL

43 Hoxton Square, N1 6NT

020 7739 5824

office@st-monicas.hackney.sch.uk

www.st-monicas.hackney.sch.uk

### HEADTEACHER

Amanda Ruthven

### SCHOOL INFORMATION

Voluntary aided Catholic school

Reception intake: 30

Nursery classes: full-time and part-time

Breakfast club: Yes

After school club: Yes



## SUMMARY OF ADMISSION CRITERIA FOR 2019

The admissions policy for St Monica's Catholic Primary School is summarised below. If you want to apply for this school you should read the full admissions policy which is available online at [www.learningtrust.co.uk/admissionrules](http://www.learningtrust.co.uk/admissionrules)

Children with an Education, Health and Care Plan that names the school will be admitted to the school and will count against the planned admission number. If there are more applications than places available the Governing Body will admit pupils in accordance with specified oversubscription criteria in priority order:

01. Catholic looked after children or Catholic children who have been adopted or made subject to child arrangements orders or special guardianship orders.
02. Catholic children with a Certificate of Catholic Practice who have a sibling at the school at the time of admission.
03. Catholic children with a Certificate of Catholic Practice who are resident in the parish of St. Monica's.
04. Catholic children with a Certificate of Catholic Practice who are resident in parishes of Our Lady's and St. Joseph's, St. Scholastica, St. Dominic's and St John's at Hackney.
05. Other baptised Catholic children.
06. Other looked after children or children who have been adopted or made subject to child arrangements orders or special guardianship orders.
07. Children of families who are Catechumens or members of an Eastern Christian Church.
08. Children from other Christian denominations whose application is supported by their Minister of Religion.
09. Children of other faiths whose application is supported by their religious leader.
10. Any other children.

Distance will be used as a tiebreaker with children living nearest the school having priority. In the event that two or more children live at the same distance from the school, the tie breaker will be random allocation.

### SUPPLEMENTARY INFORMATION FORMS (SIF)

Applicants must complete additional application forms as well as applying online to the Hackney Learning Trust. The school's Supplementary Information Form (SIF) and the Certificate of Catholic Practice are both available directly from the school or can be downloaded at [www.learningtrust.co.uk/psif](http://www.learningtrust.co.uk/psif) or from the school website.

### HOW PLACES WERE OFFERED IN 2018

All applicants seeking a place at the school for September 2018 were offered.

## 52 ST PAUL'S WITH ST MICHAEL'S CE PRIMARY SCHOOL

57a Brougham Road, E8 4PB

020 7254 1927

LFava@spsm.hackney.sch.uk

www.spsm.hackney.sch.uk

### HEADTEACHER

Kiyeran Lot

### SCHOOL INFORMATION

Voluntary aided Church of England school

Reception intake: 30

Nursery classes: full-time and part-time

Breakfast club: Yes

After school club: Yes

## SUMMARY OF ADMISSION CRITERIA FOR 2019

The admissions policy for St Paul's with St Michael's CE Primary School is summarised below. If you want to apply for this school you should read the full admissions policy which is available online at [www.learningtrust.co.uk/admissionrules](http://www.learningtrust.co.uk/admissionrules)

Children with an Education, Health and Care Plan that names the school will be admitted to the school and will count against the planned admission number. If there are more applications than places available the Governing Body will admit pupils in accordance with specified oversubscription criteria in priority order:

01. Looked after children and children who have been adopted or made subject to child arrangements orders or special guardianship orders immediately following having been looked after.
02. Children subject to a Child Protection Plan.
03. Children of parents who are on the church electoral roll of St. Michael and All Angels London Fields, or the children of parents who are prohibited from membership of the church electoral roll (because of their role in the Church of England, i.e. clergy), who can demonstrate that they are regular worshippers at St. Michael and All Angels, London Fields.
04. Children who have a brother or sister at the school at the time of their proposed entry (i.e. on the day the child is entering the school, not when applying for entry).
05. Children of parents who are practising members of a Christian denomination, who live in the Parish of St. Michael and All Angels, London Fields.
06. Children of parents who live in the Parish of St Michael and All Angels, London Fields, but who are not practising members of a Christian denomination, with priority given to those who live nearest to the school, as measured by a straight line.
07. Children of parents who are practising members of a Christian denomination, who live outside the Parish of St Michael and All Angels London Fields, for whom this is the nearest Church of England school.
08. Any other children.

Distance will be used as a tiebreaker with children living nearest the school having priority. In the event that two or more children live at the same distance from the school, the tie breaker will be random allocation.

### SUPPLEMENTARY INFORMATION FORM (SIF)

Applicants must complete an additional application form as well as applying online to the Hackney Learning Trust. The school's Supplementary Information Form (SIF) is available directly from the school or online at [www.learningtrust.co.uk/psif](http://www.learningtrust.co.uk/psif)

### HOW PLACES WERE OFFERED IN 2018

All applicants seeking a place at the school for September 2018 were offered.

## 53 ST SCHOLASTICA CATHOLIC PRIMARY SCHOOL

Kenninghall Road, E5 8BS

020 8985 3466

officeadmin@st-scholasticas.

hackney.sch.uk

www.st-scholasticas.hackney.sch.uk

### HEADTEACHER

Naomi Mulholland

### SCHOOL INFORMATION

Voluntary aided Catholic school

Reception intake: 30

Nursery classes: full-time and part-time

Breakfast club: Yes

After school club: Yes

## SUMMARY OF ADMISSION CRITERIA FOR 2019

The admissions policy for St Scholastica Catholic Primary School is summarised below. If you want to apply for this school you should read the full admissions policy which is available online at [www.learningtrust.co.uk/admissionrules](http://www.learningtrust.co.uk/admissionrules)

Children with an Education, Health and Care Plan that names the school will be admitted to the school and will count against the planned admission number. If there are more applications than places available the Governing Body will admit pupils in accordance with specified oversubscription criteria in priority order:

01. Catholic looked after children or Catholic children who have been adopted or made subject to child arrangements orders or special guardianship orders.
02. Baptised Catholic children with a Certificate of Catholic Practice who have a sibling at the school at the date of admission into the school and whose parents reside in the Parish of St Scholastica's at the date of application.
03. Baptised Catholic children with a Certificate of Catholic Practice who have a sibling at the school at the date of admission into the school and whose parents reside in the Parish of St Jude, Clapton Park or Our Lady of Good Counsel, Stoke Newington at the date of application.
04. Other baptised Catholic children who have a sibling at the school at the date of admission into the school.
05. Baptised Catholic children with a Certificate of Catholic Practice whose parents/legal guardians are resident in the Parish of St Scholastica's at the date of application.
06. Baptised Catholic children with a Certificate of Catholic Practice whose parents/legal guardians are resident in the Parish of St Jude, Clapton Park or Our Lady of Good Counsel, Stoke Newington at the date of application.
07. Other baptised Catholic children with a Certificate of Catholic Practice.
08. Other Baptised Catholic children.
09. Other looked after children or children who have been adopted or made subject to child arrangements orders or special guardianship orders.
10. Children of families who are Catechumens or members of an Eastern Christian Church.
11. Children of Christians of other denominations whose application is supported by a letter confirming membership of the faith community from their Minister of Religion.
12. Children of other faiths whose application is supported by a letter confirming membership of the faith community from their Religious Leader.
13. Any other children.



The Governing Body will give top priority, after the appropriate category of looked-after children, to an application where compelling evidence is provided at the time of application, from an appropriate professional such as a doctor, priest or social worker, of an exceptional social, medical, pastoral or other need of the child, which can only be met at this school.

Distance will be used as a tiebreaker with children living nearest the school having priority. In the event that two or more children live at the same distance from the school, the tie breaker will be random allocation.

### SUPPLEMENTARY INFORMATION FORMS (SIF)

Applicants must complete additional application forms as well as applying online to the Hackney Learning Trust. The school's Supplementary Information Form (SIF) is available directly from the school or can be downloaded at [www.learningtrust.co.uk/psif](http://www.learningtrust.co.uk/psif) or from the school website. If applicable, applicants must also supply an original (or certified copy) of the child's Baptismal certificate.

### HOW PLACES WERE OFFERED IN 2018

All applicants seeking a place at the school for September 2018 were offered.



**54 THE OLIVE SCHOOL  
HACKNEY**

66 Cazenove Road, N16 6AA

020 7683 7436

info@olivehackney.staracademies.

org

www.olivehackney.com

**HEADTEACHER**

Caterina Park

**SCHOOL INFORMATION**

Free school, Muslim

Reception intake: 90

Breakfast club: Yes

After school club: Yes

**SUMMARY OF ADMISSION CRITERIA FOR 2019**

The admissions policy for The Olive School Hackney is summarised below. If you want to apply for this school you should read the full admissions policy which is available online at [www.learningtrust.co.uk/admissionrules](http://www.learningtrust.co.uk/admissionrules)

Children with an Education, Health and Care Plan that names the school will be admitted to the school and will count against the planned admission number. If there are more applications than places available the Governing Body will admit pupils in accordance with specified oversubscription criteria in priority order:

01. Looked after children and children who were previously looked after but immediately after being looked after became subject to an adoption, a child arrangements order or special guardianship order.
02. Children of staff employed at the school for two or more years at the time at which the application for admission is made, and/or the member of staff has been recruited to fill a post where there is a demonstrable skill shortage.
03. Children with a sibling attending the school or who was a former pupil of the school and who completed Year 6.
04. Children for whom the Governing Body accepts that they have proven exceptionally strong special medical or social circumstances, which are directly relevant to attendance at the school. Parents must provide the professional supporting evidence from e.g. a consultant, doctor, psychologist, social worker or from another professional. A place will only be offered, if the Governing Body accepts the view of the professional, which confirms that the existing medical or social difficulties will be exacerbated if the admission is not offered at The Olive school, Hackney.
05. Other children who live nearest to the school.

Distance will be used as a tiebreaker with children living nearest the school having priority. In the event that two or more children live at the same distance from the school, the tie breaker will be random allocation.

**HOW PLACES WERE OFFERED IN 2018**

(data as at 16 April 2018)

| ADMISSION CRITERIA                     | NUMBERS OF OFFERS MADE<br>(last offered distance in miles) |
|--|--|
| 02. Siblings                           | 50   |
| 03. Children of staff                  | 1  |
| 05. Reside in N16                      | 19 (0.64)  |
| 06. Distance                           | 20 (0.88)  |
| <b>Number of applications received</b> | <b>177</b>   |

**55 THOMAS FAIRCHILD COMMUNITY SCHOOL**

Forston Street, N1 7HA

020 7253 9469

admin@thomasfairchild.hackney.sch.uk

www.thomasfairchild.hackney.sch.uk

**HEAD OF SCHOOL**

Heather Smith

**EXECUTIVE HEAD**

Caroline King

**SCHOOL INFORMATION**

Community school  
Reception intake: 60  
Nursery classes: full-time and part-time  
Breakfast club: Yes  
After school club: Yes

**ADMISSION CRITERIA**

See page 16. All applicants seeking a place at the school for September 2018 were offered.

**56 TYSSEN COMMUNITY PRIMARY SCHOOL**

Oldhill Street, N16 6LR

020 8806 4130

admin@tyssen.hackney.sch.uk

www.tyssen.hackney.sch.uk

**HEADTEACHER**

Jackie Benjamin

**SCHOOL INFORMATION**

Community school  
Reception intake: 60  
Nursery classes: full-time and part-time  
Breakfast club: Yes  
After school club: Yes

**ADMISSION CRITERIA**

See page 16. All applicants seeking a place at the school for September 2018 were offered.

**57 WILLIAM PATTEN PRIMARY SCHOOL**

Stoke Newington Church Street, N16 0NX

020 7254 4014 / 4915

admin@williampatten.hackney.sch.uk

www.williampatten.hackney.sch.uk

**HEADTEACHER**

Karen Law

**SCHOOL INFORMATION**

Community school  
Reception intake: 60  
Nursery classes: full-time and part-time  
Breakfast club: Yes  
After school club: Yes

**ADMISSION CRITERIA**

See page 16. For information about how places were offered in 2018 see page 17.

**58 WOODBERRY DOWN COMMUNITY PRIMARY SCHOOL**

Woodberry Grove, N4 1SY

020 8800 5758

WDOoffice@newwavefederation.co.uk

www.woodberrydown.hackney.sch.uk

**HEADTEACHER**

Derek Hewie

**INTERIM EXECUTIVE HEADTEACHER**

Nicole Reid

**SCHOOL INFORMATION**

Community school  
Reception intake: 90  
Nursery classes: full-time and part-time  
Breakfast club: Yes  
After school club: Yes

**ADMISSION CRITERIA**

See page 16. All applicants seeking a place at the school for September 2018 were offered.





## FURTHER INFORMATION

### NEIGHBOURING LOCAL AUTHORITIES

You can apply for a place at any primary school in London by listing them as a preference on the online application form. You should contact the relevant school admissions team listed below for information about schools in their area.

Haringey, 020 8489 1000  
[www.haringey.gov.uk/schooladmissions](http://www.haringey.gov.uk/schooladmissions)

Islington, 020 7527 5515  
[www.islington.gov.uk/admissions](http://www.islington.gov.uk/admissions)

Newham, 020 8430 2000  
[www.newham.gov.uk/schooladmissions](http://www.newham.gov.uk/schooladmissions)

Tower Hamlets, 020 7364 5006  
[www.towerhamlets.gov.uk/schooladmissions](http://www.towerhamlets.gov.uk/schooladmissions)

Waltham Forest, 020 8496 3000  
[www.walthamforest.gov.uk/service-categories/applying-school-place](http://www.walthamforest.gov.uk/service-categories/applying-school-place)

### PUPIL BENEFITS

If you receive certain Department for Work and Pensions (DWP) benefits and Inland Revenue Tax Credits you may qualify for pupil benefits from Hackney Council. Parents can get free school meals when their child starts nursery class (full-time) or school and help with home to school travel fares.

### PUPIL PREMIUM

When your child starts school and you meet the eligibility criteria for free school meals as described below, your child's school receives significant additional funding from the Department of Education. This is called the Pupil Premium funding and the school uses this to help your child learn.

You must apply for this funding by registering online with the Hackney Citizens Portal and making an application for free school meals. Go to [www.learningtrust.co.uk/pupilbenefits](http://www.learningtrust.co.uk/pupilbenefits) for more information and to make your application.

### FREE SCHOOL MEALS

All children starting school in the reception class, Year 1 or Year 2 in a state-funded school, including academies and free schools, will get a free meal at school regardless of income.

For children attending a school nursery, or attending in Years 3 to 6, you will have to pay for the school meals unless you are in receipt of one of the following benefits.

- [Income support](#)
- [Job Seekers Allowance](#)
- [Employment and Support Allowance](#)
- [NASS support](#)
- [State Pension](#)
- [Child Tax Credit](#), with an income of £16,190 or less where the household is not getting Working Tax Credit
- [Working Tax Credit](#) for the four weeks after employment ends
- [Universal Credit](#), Your household income must be less than £7,400 a year (after tax and not including any benefits you get)

You must apply online by registering online with the Hackney Citizens Portal and making an application for free school meals. Go to [www.learningtrust.co.uk/pupilbenefits](http://www.learningtrust.co.uk/pupilbenefits) for more information and to make your application.

If you are not entitled to pupil benefits, school meals are available for a standard charge. Schools can also arrange meals for children who have special diets for religious or health reasons. You should speak with your child's school about this.

### HELP WITH HOME TO SCHOOL TRAVEL

Hackney Learning Trust can help with tube and/or train fares for children living in Hackney. Children are entitled to free transport if there is no suitable, alternative, nearer school place on offer, and they cannot reasonably be expected to travel by bus. Bus fares are currently free for primary aged children (see the section below on 'Free transport for children in London').

Children who are entitled to free transport will be funded to purchase a travel card each term. This will allow them to travel to and from a state-funded school. Hackney Learning Trust will pay for the cheapest form of suitable transport from home to school. You can apply at any time, but you must live in the borough of Hackney. If you have been assessed on your income, you will have to reapply every year to check that you are still entitled to this help. You have the right to appeal if you are refused help with travel costs.



Children can qualify to free transport if any of the below circumstances apply.

**Non-income assessed parents**

01. Children with special educational needs, disability or mobility problems without suitable, alternative, nearer school place on offer. Also, children who cannot be expected to walk to school, even though it is within the normal walking distance of two miles (if aged 5–7) or three miles (if aged 8 or over). Evidence of the child's disability or mobility difficulties must be provided.
02. Children that cannot reasonably be expected to walk a particular route – even though the school is within the normal walking distance of two miles (if aged 5-7) or three miles (if aged 8 or over) because of the nature of the route.
03. Children attending a school outside the distance (two miles if aged 5 to 7 and three miles if aged 8 or over), who do not have a suitable alternative nearer school placement offer.
04. Children attending a school outside the distance (two miles if aged 5 to 7 and three miles if aged 8 or over) on grounds of religion or belief who do not have a suitable alternative nearer school available to them. Parents will need to prove that they have applied and been refused a place at other equivalent nearer schools.

**Income assessed parents**

The below criteria applies only to students who are either eligible for Free School Meals or have parents in receipt of their maximum level of Working Tax Credit.

01. Children aged 8 but under 11, where there are not three or more suitable nearer school places, and where the school place is more than two miles but not more than six miles from home.

**Disabled parents**

(Non-income assessed and income assessed)

Hackney Learning Trust may provide free travel to support children to attend a school or other education provision within the normal or even within the statutory walking distance if the parent has a disability that may prevent them from accompanying their children to school. However if the parent is in receipt of transport assistance as part of their disability living allowance they will not receive this support. Parents would be expected to meet the above eligibility criteria.

Hackney Learning Trust will consider the safety of the route when measuring statutory walking distance.

**FREE TRANSPORT FOR CHILDREN IN LONDON**

Hackney has a great network of buses, London overground and rail links making it easy to get to any of our local schools.

**Under 5s**

Children under 5 can travel free at any time on Buses, Tube, Trams, DLR, London Overground, TfL Rail, Emirates Air Line and most national rail services in London. They must be accompanied by an adult who has a valid ticket, a Freedom Pass or an Oyster photocard (up to four children per adult).

**Under 11s**

Children under 11 can travel free on Tube, DLR, London Overground and TfL Rail services if:

- they have a 5–10 Zip Oyster photocard, or
- are accompanied by an adult who is using pay as you go, or has a valid ticket (excluding Group Day Travelcards), a Freedom Pass or an Oyster photocard (up to four children per adult).

Under 11s can travel free on London buses and trams at any time unaccompanied by an adult; they do not need an Oyster card or a ticket.

Children with a 5-10 Zip Oyster photocard can travel free on most National Rail services where pay as you go is accepted.

To apply online for your child's 5–10 Zip Oyster Photocard, visit [www.tfl.gov.uk/fares-and-payments/](http://www.tfl.gov.uk/fares-and-payments/)

For more information please contact Transport for London (open 24 hours a day, 7 days a week) Call [0343 222 1234](tel:03432221234) — **Charges apply**

## EXPLANATION OF TERMINOLOGY

### Academies and free schools

Academies and free schools are state-funded schools independent from the local authority and responsible for their own admission arrangements.

### Admission arrangements/admissions criteria

A formal document that sets out how a school or local authority will manage the admission of pupils. The document normally explains which applications will have priority for places (the admission criteria or oversubscription criteria) if the school has more applications than places.

### Allocation/allocated

The offer of a school place or the process of offering a school place.

### Applicant

The person (parent, carer or family member) who has parental responsibility or care of the child and who has submitted the application for a school place.

### CCP (Certificate of Catholic Practice)

This is an additional form to be completed for applicants considered under the criteria of Catholic schools. All practising Catholic families applying for a place at Hackney's Catholic secondary schools must complete and return a CCP signed by their parish priest directly to the school by the published closing date. CCP forms are available from the parish where your family normally worships and is also on the Westminster Diocese website.

### Community schools

State-funded schools whose admission arrangements are set by the local authority.

### Computerised distance measuring system

A way of calculating straight line distances from a child's home address to the main entrance of the school.

### Cut-off distance

The home-to-school distance of the last pupil who was offered a place under the distance criterion.

### Education, Health and Care Plan

A document which sets out the education, health and social care needs of children and young people aged up to 25 and the support that is necessary to cater for those needs. The document will usually name the specific school that the child or young person must attend.

### Fair access protocol

A process for admitting pupils to school other than through the normal admissions process.

### Home local authority

A child's home local authority (local council) is the Local Authority (LA) where they live i.e. the council you pay your council tax to.

### Looked after children

A looked after child is a child who is (a) in the care of a local authority, or (b) being provided with accommodation by a local authority in the exercise of their social services functions in accordance with section 22 of the Children Act 1989(a) at the time an application to a school is made.

### Ofsted

Ofsted is the Office for Standards in Education, Children's Services and Skills. Ofsted inspect and regulate services that care for children and young people, and services providing education and skills for learners of all ages. [www.ofsted.gov.uk](http://www.ofsted.gov.uk)

### Oversubscribed/oversubscription criteria

An oversubscribed school has more applications than places available. Oversubscription criteria are the rules used to determine who has priority for a place at an oversubscribed school.

### PAN (published admission number)

The maximum number of children that can be admitted to a school at the normal point of entry.

### Preferences

A ranked list of schools submitted on an application, with the most desired school first, followed by the second most desired school, and so on.

### Previously looked after children

Previously looked after children are children who were looked after, but ceased to be so because they were adopted or became subject to a child arrangements order or special guardianship order. This includes children who were adopted under the Adoption Act 1976 and under the Adoption and Children Act 2002. Child arrangements orders replace residence orders in force prior to 22 April 2014.

### Pupil premium

Pupil premium is additional funding for publicly funded schools in England to raise the attainment of disadvantaged pupils and close the gap between them and their peers.

### Random allocation

A process of offering school places by lottery. Random allocation is usually determined using a computer system developed by a software company independent of the schools or performed manually in the presence of an independent witness e.g. drawing names out of a hat.

### Religious or faith schools

These schools practise a particular faith and their governing body is responsible for their own admission arrangements.

### Sibling

Sibling normally refers to a brother or sister, half-brother or sister, adopted brother or sister, step-brother or sister, or the child of the parent or carer's partner, living as a family unit at the same address. A sibling must live permanently at the same address as the child for whom the application is being made. Siblings do not include cousins, aunts, uncles or any other family relations.

In addition, for Hackney community primary schools where the family has moved address since the last sibling was offered a place, priority will only be given where the family continue to live within 0.75 miles of the school.

### SIF (Supplementary Information Form)

This is an additional form that must be completed by applicants to faith schools. The completed form must be signed by a religious leader and submitted directly to the faith school by the published closing date. SIFs are available from faith schools and Hackney Learning Trust.

### Voluntary-aided schools

Voluntary-aided schools are often religious schools funded by the local authority. The governing bodies of Hackney's religious schools set and apply their own admission criteria.







Hackney Learning Trust

1 Reading Lane  
London E8 1GQ

T. 020 8820 7000

[www.learningtrust.co.uk](http://www.learningtrust.co.uk)