

SAFEGUARDING CHILDREN

The Bridge Academy is committed to safeguarding and promoting the welfare of children. We expect all staff and to share this commitment, therefore all positions will involve a degree of responsibility for the safeguarding and welfare of children.

CVs will not be accepted in place of application forms. References and an online search will be sought for candidates at the short-listing stage.

All positions are exempt from the provisions of the Rehabilitation of Offenders Act 1974 (Exceptions) Order 1975 (2013 and 2020). At the short-listing stage applicants will need to complete a self-declaration form, providing details of any previous convictions and cautions, including those which would normally be considered "spent", except those that are classed as protected offences.

The appointment will be subject to the necessary safeguarding checks, which include:

- 2 satisfactory references, including the most recent employer.
- A satisfactory social media check
- A satisfactory Enhanced DBS check (including a barred list information).
- Additional overseas checks where required.
- A fitness health questionnaire to verify the individual's
- mental and physical fitness to carry out their
- work responsibilities.
- Verification of the individual's right to work in the UK and professional qualifications as appropriate.
- A section 128 direction check

Please refer to further information on our safeguarding and child protection procedures on our website [here](#)



STAFF REWARDS & BENEFITS

We believe that working at The Bridge Academy is different from working at other Academies - we are always prepared to go the extra mile for our students to succeed. Our Academy has many unique aspects and one of them is the degree to which we care for our staff. A snapshot of some of the particular rewards and benefits are outlined below.

Annual Salaries

We offer competitive salaries including recruitment & retention allowances, in some cases.

Annual Season Ticket Loans

Staff members can apply for an annual season ticket loan where the cost of the season ticket is spread over 10 monthly payments, interest free.

Cycle Scheme and Green Commute Initiative

<http://www.cyclescheme.co.uk>

<https://www.greencommuteinitiative.uk/> These bike

schemes provide staff members with the opportunity to purchase a bike of their choice, tax free. This for most people means a saving of around 32-47% of the total cost. Payment(s) are deducted via payroll over a specific period.

Mindfulness Programme

Headspace is a mindfulness programme offered by UBS to all Bridge staff. It is an app-based solution of guided techniques designed to help you find more balance, wind down after a long day and reduce stress levels. It also gives helpful advice on physical exercises and healthy living, improving your sleeping habits and increasing your energy levels overall.

Optical Expenses

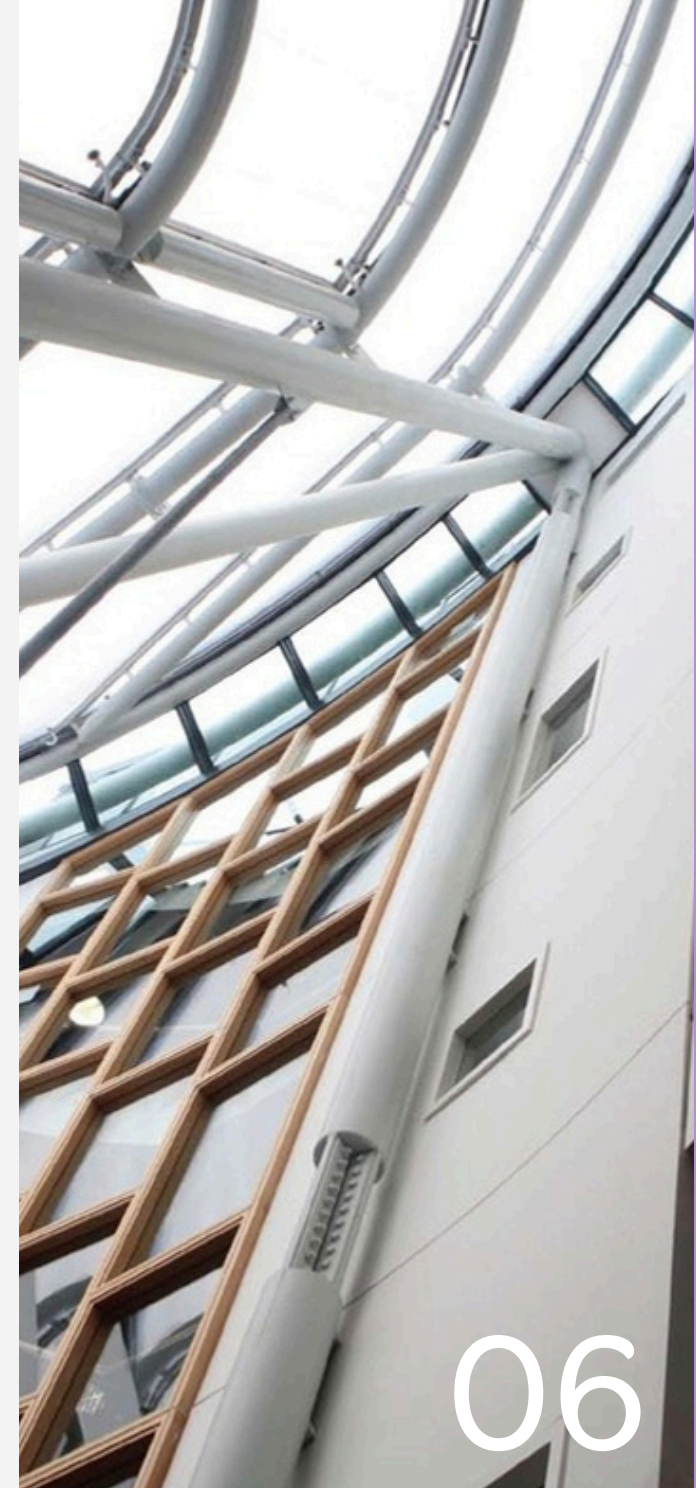
A contribution up to the amount of £30 is paid on behalf of the Academy for staff who require an eye tests. A contribution of £80, is also available towards glasses, for staff who frequently use Display Screen Equipment (DSE) and require glasses solely for this use.

Work + Family Space Services (Sponsored by UBS)

This service provides practical support, resources and information to working parents and carers, in order to assist them in juggling the demands of work and family.

This includes:

- Backup Care: staff can book nannies, nurseries, childminders and/or adult and eldercare specialists when and where they need them. Staff are eligible to receive 10 free sessions of back up care per year.
- Help for fathers: topical information and Q&A responses looking at work and family from a father's point of view
- Confidential expert advice over the phone for all work and family challenges.
- Access to a range of holiday clubs nationwide, ideal for filling in awkward care gaps during the school holidays.
- Access to blogs, insider guides and webinars which provide guidance on a wide range of topics.



Our Award-Winning Building

The quality of the working environment at The Bridge Academy contributes to the positive working atmosphere. We offer our staff members state of the art facilities & fantastic resources

at our stunning canal-side location, just minutes from Haggerston Station and just over a mile from the heart of the City of London. Our facilities include the following:

Art Floor

- 3 designer classrooms A Kiln room An Art terrace
- affording views of London landmarks including the Olympic Park, Canary Wharf and the City and the BT Tower

ICT suites

- 3 purpose-built ICT suites & 1 suite with retractable I-desks.
- ICT facilities on all floors within the Academy

Music Facilities

- A large, dedicated, fully equipped music area, with two large classrooms and 11 practice rooms.
- 2 music technology classrooms, equipped with Mac computers and midi keyboards

Performance Hall

- 350+ seat auditorium with bleacher seating and a retracting dividing wall to create spaces on two levels.
- Cinema projection capability, instruments and AV lighting and sound systems.

Sixth Form: A bespoke Sixth Form block

Sports Facilities

A large sports hall, with a variety of sports resources
Basketball facilities An Off-site Multi User Games Area (MUGA) and two Astro turf football pitches

Pension Scheme Contributions

We pay in a high percentage of monthly contributions for teaching staff (Teachers' Pension Scheme) and Support Staff (Local Government Pension Scheme) members enrolled in these pension schemes.

Relocation Support for Teaching Staff

New appointees joining The Bridge Academy on an annual salary below £30,000 may be eligible for additional support towards relocating to London. Applicants whom wish to be considered, should provide an additional statement with their application form, confirming details of the proposed relocation. Relocation support is not mandatory and the decision to provide support will be based on the applicant meeting a set of criteria.

Social Events: Lively staff social events are organised during the year, to ensure that staff members get the opportunity to unwind and enjoy a well-deserved break from work.

